



# Dynablast

A DIVISION OF JOHN BROOKS COMPANY LIMITED



## DIESEL FIRED WATER HEATERS

	<b>NON-STEAM MODELS ETL CERTIFIED</b>	
Model	<b>CAB420FLS-12V</b>	<b>HV590FLS-12V</b>
BTU	420,000	590,000
Heat Rise	5 GPM @ 120°F	8 GPM @ 120°F
Coil	1/2" Schedule 80	3/4" Schedule 80
Burner	Beckett ADC 12V	Beckett SDC 12V
Fuel Consumption	3.06 GPH	3.98 GPH
Coil Water Discharge	Top	Top
Fuel Pressure Gauge	No	Yes
Temperature Gauge	Yes	Yes
Dimensions	24" x 24" x 62.5"	25" x 25" x 58"
Weight	485lbs	570lbs

All Heaters Fuel - No. 1 or No. 2

### CABINET MODEL FEATURES

- 14 Gauge Steel Cabinet
- Polyester Powder Coat Paint
- Stainless Steel Hinges and Hardware
- Reversible Hinge Door
- Two Service Access Panels
- Gas Prop (Door)
- Aluminium Discharge Cap



**CAB420FLS-12V**



**HV590FLS-12V**

## THE ONLY CHOICE FOR HYDROVAC!

# HVLS SERIES



**HV690FLS-12V**



**HV300FLS-12VRED /  
HV420FLS-12VRED**



**HV300FLS-12V /  
HV420FLS-12V**

HV120DPLS Control Box included with models HV690FLS-12V, HV700FLS and HV900FLS

## NON-STEAM MODELS | ETL CERTIFIED

Model	HV300FLS-12VRED	HV300FLS-12V	HV420FLS-12VRED	HV420FLS-12V	HV690FLS-12V	HV700FLS	HV900FLS
BTU	300,000	300,000	420,000	420,000	690,000	700,000	900,000
Heat Rise	4 GPM @ 120°F	4 GPM @ 120°F	5 GPM @ 120°F	5 GPM @ 120°F	10 GPM @ 120°F	10 GPM @ 120°F	14 GPM @ 120°F
Coil	1/2" Schedule 80	1/2" Schedule 80	1/2" Schedule 80	1/2" Schedule 80	3/4" Schedule 80	3/4" Schedule 80	3/4" Schedule 80
Burner	Beckett ADC 12V	Beckett ADC 12V	Beckett ADC 12V	Beckett ADC 12V	Beckett SDC 12V	Wayne EH 120V	Beckett CF800 120V
Fuel Consumption	1.98 GPH	1.98 GPH	3.06 GPH	3.06 GPH	4.73 GPH	5.03 GPH	5.81 GPH
Coil Water Discharge	Top	Top	Top	Top	Bottom	Bottom	Bottom
Fuel Pressure Gauge	No	No	No	No	Yes	Yes	Yes
Temperature Gauge	Yes	Yes	Yes	Yes	Yes	Yes	Yes
Dimensions	19" x 19" x 41.75"	19" x 20" x 49.75"	19" x 19" x 51.25"	19" x 19" x 59.25"	26.5" x 26.5" x 58"	26.5" x 26.5" x 58"	26.5" x 26.5" x 64"
Weight	340lbs	345lbs	375lbs	380lbs	850lbs	850lbs	900lbs

All Heaters Fuel - No. 1 or No. 2

### RUGGED DESIGN

- Welded Inner Coil Skin for Coil Support
- Welded 7 Gauge Wrapped Steel Base & Leg Support
- 16 Gauge Outer Skin/ Cap
  - Stainless Steel Target Plate in All Coils
  - Powder Coated Paint Finish

### SERVICE ABILITY

- Welded Inner Coil Skin for Coil Support
- Welded 7 Gauge Wrapped Steel Base & Leg Supports
- 16 Gauge Outer Skin/ Cap
  - Stainless Steel Target Plate in All Coil
  - Powder Coated Paint Finish



# THE ONLY CHOICE



**HV690F-12V**



**HV700F**

HV120DP Control Box included with models HV690F-12V, HV700F and HV900F

	STEAM MODELS   ETL CERTIFIED		
Model	HV690F-12V	HV700F	HV900F
BTU	690,000	700,000	900,000
Heat Rise	10 GPM @ 120°F	10 GPM @ 120°F	14 GPM @ 120°F
Coil	3/4" Schedule 80	3/4" Schedule 80	3/4" Schedule 80
Burner	Beckett SDC 12V	Wayne EH 120V	Beckett CF800 120V
Fuel Consumption	4.73 GPH	5.03 GPH	5.81 GPH
Coil Water Discharge	Bottom	Bottom	Bottom
Fuel Pressure Gauge	Yes	Yes	Yes
Temperature Gauge	Yes	Yes	Yes
High Pressure & Steam Operating Valves	Yes	Yes	Yes
Dimensions	26.5" x 26.5" x 58"	26.5" x 26.5" x 58"	26.5" x 26.5" x 64"
Weight	850lbs	850lbs	850lbs

All Heaters Fuel - No. 1 or No. 2

## HEATING COIL

- 1/2" or 3/4" Schedule 80 (Available in Sch. 160)
- ASTM A53 Close Coiling Pipe
- Resistance Butt-Welded into Continuous Length
- 3,500 PSI Hydrostatic Pressure Tested
- Vertically Fired

## SAFETY

- High Limit Switch
- Pressure Relief Valve
- Flow Switch
- Thermostat & Temperature Gauge
- Primary Control (CAD)



Certified U11776  
CSA B140-1-M89

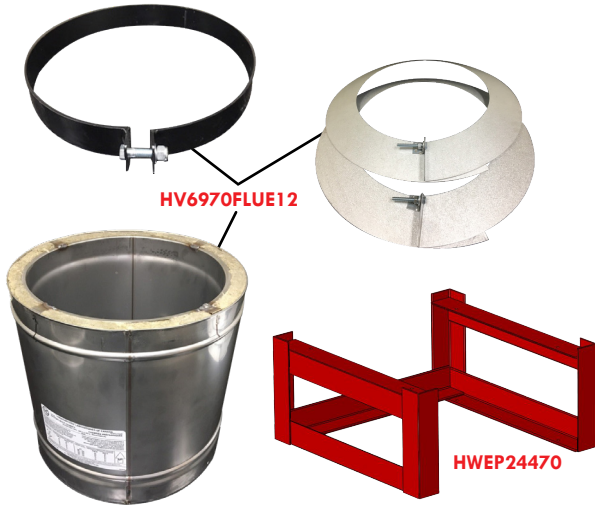
# FOR HYDROVAC!



TEL: 905-867-4642  
WWW.DYNABLAST.CA

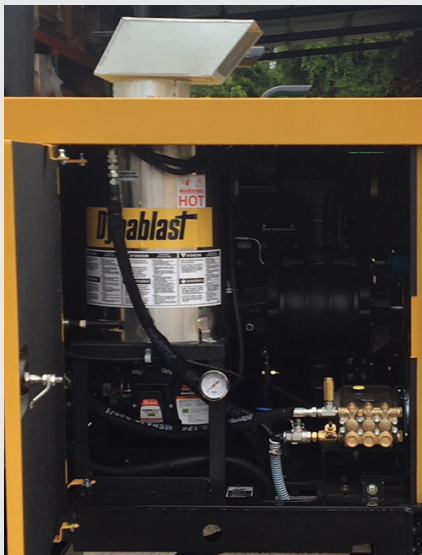


# CUSTOMIZED OEM SOLUTIONS!



## AVAILABLE CHIMNEY KITS AND LIFT STAND

Part Number	Description	Diameter	Height	Fits Models
<b>HV420FLUE12</b>	Chimney Kit	8"	12"	420
<b>HV420FLUE24</b>	Chimney Kit	8"	24"	420
<b>HV6970FLUE12</b>	Chimney Kit	10"	12"	590, 690, 700
<b>HV6970FLUE24</b>	Chimney Kit	10"	24"	590, 690, 700
<b>HWP24470</b>	Lift Stand	26.5" x 26.5"	12"	590, 690, 700



## NEED A CUSTOMIZED SOLUTION?

Dynablast can supply  
custom ETL Certified  
products to fit OEM needs.

All designs can be  
provided in a 3D Model to  
ensure fit and finish on the  
truck or trailer.



DFWH\_EN\_01/22