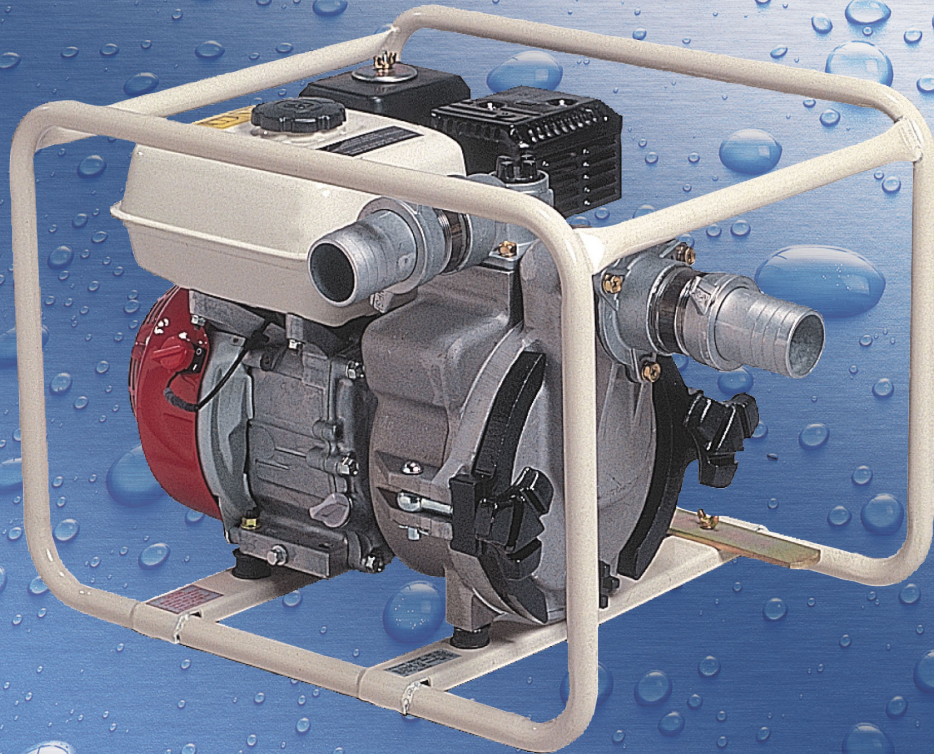


KODIAK POWER EQUIPMENT PWP2SWT

Technical Manual



Specifications / Reference

	PWP2SWT
Port Size	2" NPT
Seal Material	Silicon Carbide
Impeller Material	Cast Iron
Volute Material	Cast Iron
Pump Casing Material	Aluminum
Suction Lift ft (m)	26 (8)
Max Head ft (m)	85 (26)
Max Flow gpm (lt/min)	158 (600)
Solids Capacity in (mm)	.8 (20)
Weight lbs (kg)	74 (33.7)
size inches (mm) LxWxH	25x17x19.5 (635x431x495)
Engine	Honda GX160
Engine Spec #	K1WKT2
Engine type	4 stroke
oil Alert	Yes
Engine output hp(kw)	5.5(4.1)
Fuel Tank Capacity gal (l)	1(3.8)

Centrifugal Pump Reference Information

Losses due to hose friction

Hose Friction losses					
Pressure Drop in psi per 100 ft of hose with typical flow rates					
Water Flow (gpm)	1"	1.5"	2"	3"	4"
10	7				
20	26				
30	56	8			
40	96	13			
50	144	20	5		
100		72	18		
150		153	38	5	
200			64	8.9	
250			97	14	
300				19	4
350				25	6
400				32	8
450					10
500					12
550					14

Losses are expressed in feet of head loss

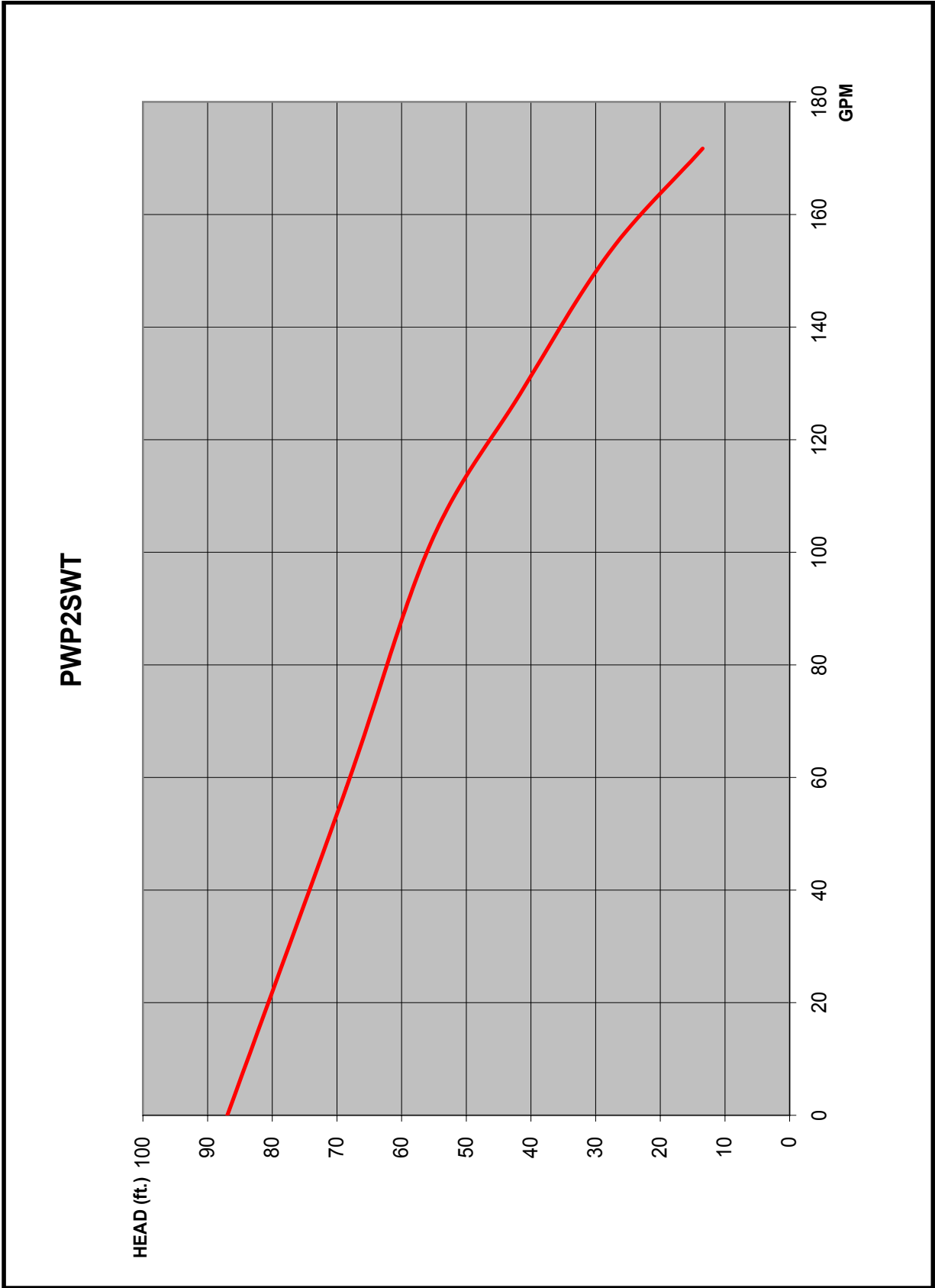
Values are based on the Hasen-Williams Equation and are close approximations

Losses due to elevation

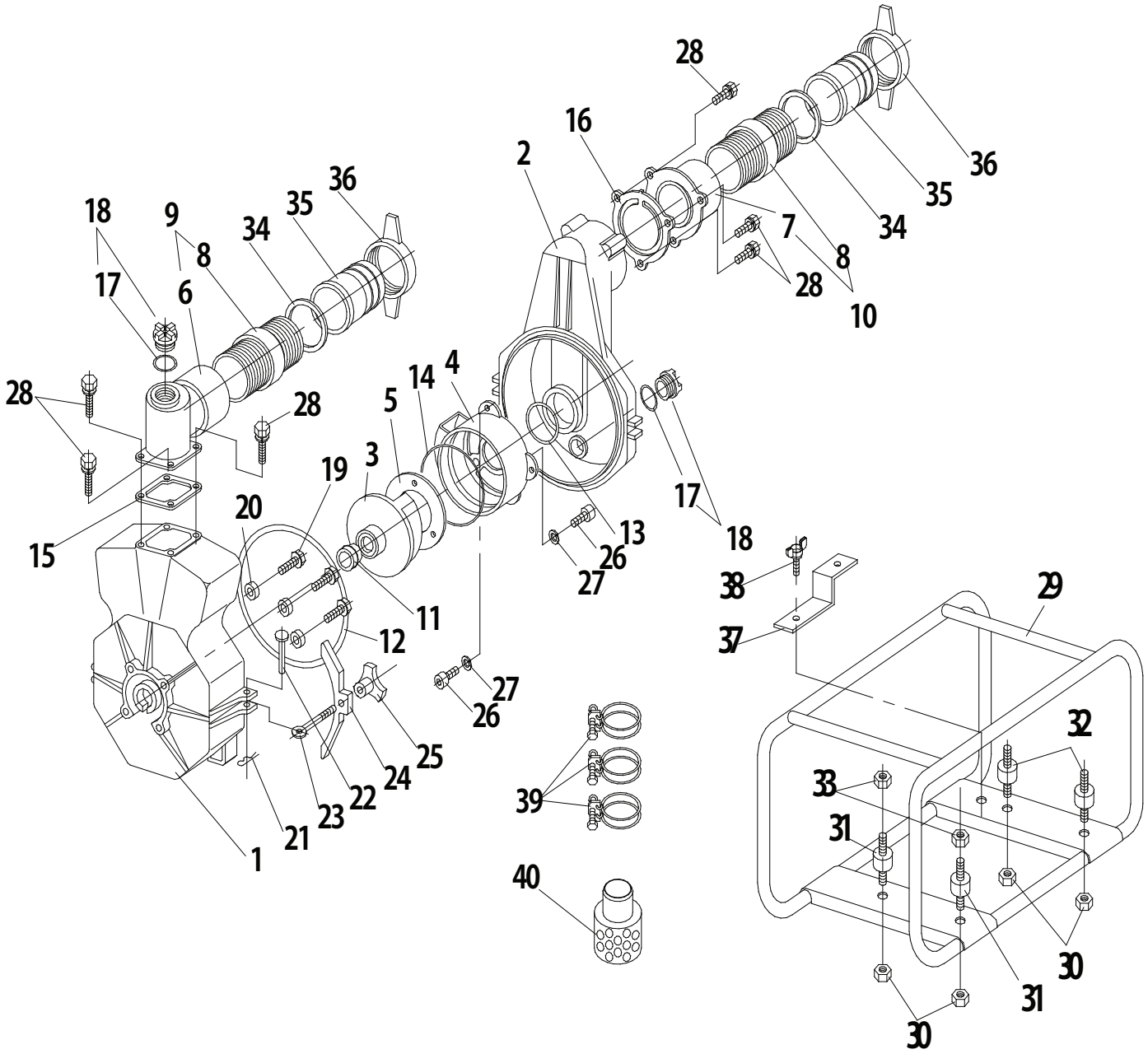
Pressure can be designated in many units from bar (si), psi (imperial) or also in high of a water column (feet or metres). In imperial units the weight of one foot of water is equal to .4328 psi. In other words for every foot of elevation change from the discharge of the pump to the point of discharge of the hose there is a pressure of .4328 psi applied to the pump.

1 foot of water (head) = .4328 psi

Pump Curve PWP2SWT



Parts Illustration PWP2SWT



Parts List PWP2SWT

REF No.	Parts No.	Parts name	Q'ty	Remarks
1	521-001	CASING	1	SWT-50
2	521-002	CASING COVER	1	SWT-50
3	521-004	IMPELLER	1	
4	521-003	INNER CASING	1	
5	521-007N	LINER	1	SWT-50
6	521-010NA	BEND	1	IN-LOW-NPSM2
7	521-009NA	VALVE CASE	1	IN-NPSM2
8	521-038A	FITTING PIPE	2	2B NPT-NPT
9	-	BEND ASSY	(2)	NPT2
10	-	VALVE CASE ASSY	(2)	NPT2
11	571-010	MECHANICAL SEAL	1	2",3"Sic
12	521-017	O-RING	1	G-210
13	521-020	O-RING	1	G-55
14	521-021	O-RING	1	S-140
15	501-020	PACKING,BEND	1	
16	521-011N	CHECK VALVE	1	
17	501-022	O-RING	(2)	P-24
18	-	PLUG ASSY	2	
19	501-005	FLANGE BOLT	4	M8x46
20	501-006	AL WASHER	4	8.2-17-3.0
21	521-034	SNAP PIN	2	φ10
22	521-014	RIVET	2	φ10
23	521-013	COVER BOLT	2	M12
24	521-016	CASING COVER HOLDER	2	
25	521-015	KNOB	2	M12
26	521-029	HEX.SOCKET BOLT	5	M6x16 SUS
27		SPRING WASHER	5	M6 SUS
28	501-014	HEX.BOLT	7	M8x25 P=2
29	521-005	FRAME(WHITE)	1	
30	1001-024	SPRING NUT	6	M8
31	521-019P	ANTI-VIBRATION RUBBER	2	
32	521-019E	ANTI-VIBRATION RUBBER	2	
33	501-024	FLANGE NUT	2	M8
34	501-017	PACKING,COUPLING	2	NBR
35	501-018	HOSE COUPLING	2	ABS
36	501-016A	COUPLING HANDLE	2	NPSH2
37	521-035	MULTI-PURPOSE TOOL	1	
38	521-036	WING BOLT	1	M6x15