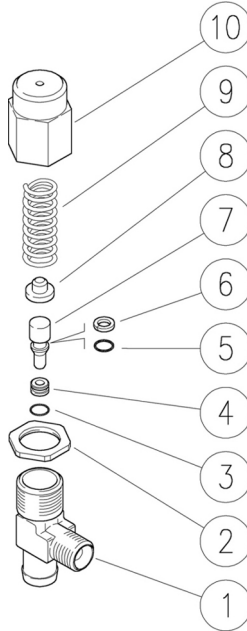


60.0560.00 VS160 saf.valv.1/4M-1/8F Bsp/13mm h.barb



60.0560.30 VS30 saf.valv.1/4M-1/8F Bsp/13mm h.barb

Pos.	P/N	Description	Q.ty	K1	K2	K3	K4	
1	60.0561.35	Valve housing -VS160-30, brass	1					1
2	60.0317.31	Locknut, M18x1 brass	1					10
3	10.3002.01	O-ring, 1x5 mm Ni 85	1	•				10
4	60.0564.51	Seat, 3,3x7x4 mm Sst.	1	•				5
5	10.3049.01	O-ring, 1,78x5,28 mm	1	•				10
6	10.4002.52	Back-up ring, 5x8x1,5 mm	1	•				10
7	60.0562.51	Piston, 8mm Sst.	1					5
8	60.0310.61	Spring guide, z.pl.	1					10
9	60.0563.61	Spring, 3x12,6x33 mm z.pl.	1					5
9	60.0567.61	Spring, 2,2x10,2x33 mm z.pl. (1)	1					5
10	60.0304.31	Valve regulating knob, brass	1					5

Kit	P/N	Description	
K1	60.0566.24	Spares kit -VS160-30, 4x1pcs.	1

(1) 60.0560.30