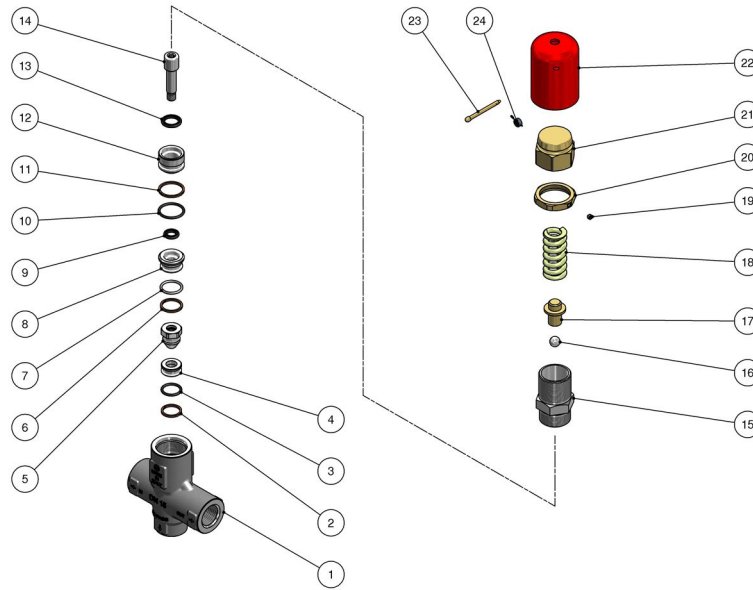


60.1423.14 VS23-14 MPa-200°C safety valv. PED 1/2Bsp  
 60.1423.15 VS23-15 MPa-200°C safety valv. PED 1/2Bsp  
 60.1423.20 VS23-20 MPa-200°C safety valv. PED 1/2Bsp

60.1423.22 VS23-22 MPa-200°C safety valv. PED 1/2Bsp  
 60.1423.25 VS23-25 MPa-200°C safety valv. PED 1/2Bsp  
 60.1423.28 VS23-28 MPa-200°C safety valv. PED 1/2Bsp



Pos.	P/N	Description	Q.ty	K1	K2	K3	K4	
1	60.5401.55	Housing -VS23-VRP/P600, 1/2F Bsp brass	1					1
2	10.4036.17	Back-up ring, 14x2x17x1,5 mm	1					10
3	10.3060.10	O-ring, 1,78x12,42 mm Vi 70	1					10
4	60.5404.51	Seat, 9,2x17x7,5 mm Sst.	1					5
5	60.5403.51	Shutter pin, M7 Sst.	1					3
6	10.4039.00	Back-up ring, 15,7x18,5x1,5 mm	1					10
7	10.3066.10	O-ring, 1,78x15,6 mm Vi 70	1					10
8	60.5410.51	Lower spacer ring, 8x21,4x11,5 mm Sst.	1					3
9	10.2008.00	Stem seal, 8x13x2,2 mm +O-ring	1					5
10	10.3070.10	O-ring, 1,78x18,77 mm Vi 70	1					10
11	10.4057.00	Back-up ring, 18,7x21,5x1,5 mm	1					10
12	60.5409.51	Upper spacer ring, 8,3x21,5x17 mm Sst.	1					3

Pos.	P/N	Description	Q.ty	K1	K2	K3	K4	
13	10.2013.00	Stem seal, 12x17x2,2 mm +O-ring	1					5
14	60.5408.51	Piston, M7 Sst.	1					5
15	60.5407.51	Piston holder, Sst.	1					5
16	14.7443.10	Ball, 11/32" Sst.	1					10
17	60.5406.31	Spring rest pin, brass	1					3
18	60.0975.61	Spring, 4,2x19,7x42 mm z.pl.	1					10
19	16.2100.00	Set screw, DIN914 M4x4 mm	1					10
20	60.1814.31	Ring nut, M27x1 brass	1					5
21	60.1727.31	Valve regulating insert, brass	1					5
22	60.1418.41	Knob x block. press al-red	1					3
23	60.0599.31	4 mm pierced pin	1					5
24	60.1419.24	Seal+wire kit, 80mm 5pcs	1					1