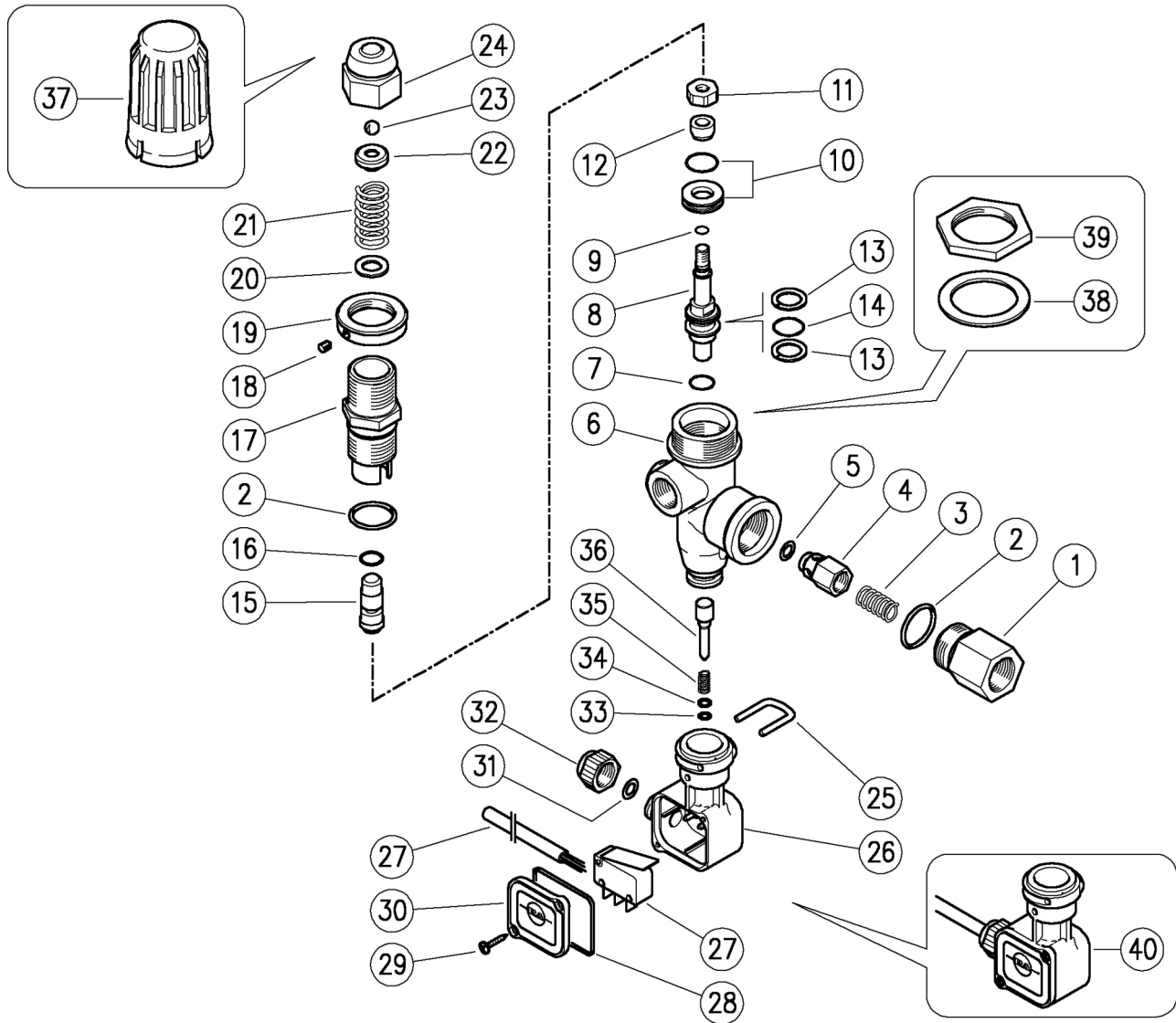


60.1280.00 VB8 unload. 3/8F Bsp, port:3/8M+micr/sw

60.1290.00 VB8 unload. 3/8F Bsp, port:3/8M+m/sw+knb



Pos.	P/N	Description	Q.ty	K1	K2	K3	K4
1	60.0058.31	Delivery coupl., 3/8F Bsp brass	1				5
2	10.3070.02	O-ring, 1,78x18,77 mm Ni 85	2	•			10
3	60.0053.51	Spring, 0,7x9x20 mm Sst.	1				10
4	60.0052.99	Shutter pin, brass+o-ring 3x6 mm	1				10
5	10.3213.00	O-ring, 3x6 mm	1	•			10
6	60.1201.35	Housing -VB8, 3/8M Bsp c/sunk, brass	1				3
7	10.3170.08	O-ring, 2,62x7,6 mm Ni 85	1	•			10
8	60.1206.31	Piston, M6 brass	1				5
9	10.3001.01	O-ring, 1x4 mm Ni 85	1	•			10
10	60.2221.20	Seat+O-ring	1	•			3
11	60.1205.31	Special nut, M6 brass	1				10
12	60.2205.61	Sst shutter	1	•			1
13	10.4021.00	Back-up ring, opn. 11,5x15,9x1,2 mm	2	•			10
14	10.3175.00	O-ring, 2,62x10,77 mm	1	•			10
15	60.1204.31	Spring rest pin, brass	1				5
16	10.3167.01	O-ring, 2,62x5,23 mm Ni 85	1	•			10
17	60.1203.31	Piston holder, brass	1				5
18	16.2100.00	Set screw, DIN914 M4x4 mm	1				10
19	60.1704.31	Ring nut, M22x1 brass	1				5
19	60.1207.31	Ring nut, M22x1 brass (1)	1				1
20	14.3719.00	Washer, 9x15x1,5 mm Sst.	1				10

Pos.	P/N	Description	Q.ty	K1	K2	K3	K4
21	60.1208.61	Spring, 3,2x15,4x33 mm z.pl.	1				5
22	60.1210.31	Spring guiding ring	1				10
23	14.7421.50	Ball, 1/4" Sst.	1				10
24	60.1209.31	Valve regulating insert, brass	1				5
25	29.0087.51	U-bolt, Sst.	1				10
26	29.0089.84	Housing, PR5 PA black	1				10
27	12.5006.00	Cable, 3x0,75 L.1000 mm+ Microswitch	1				5
28	10.3206.01	O-ring, 2,62x28,25 mm	1				10
29	16.3020.00	S/tapp. screw, 2,5x12mm chrom	2				10
30	29.0088.84	Lid, PR5 PA black	1				10
31	10.3169.00	O-ring, 2,62x6,02 mm	1				10
32	29.0082.84	Locknut for cable gland, PA black	1				10
33	10.3038.00	O-ring, 1,78x3,68 mm	1				10
34	14.3519.53	Washer, 4x8x0,8 mm Sst.	1				10
35	60.2303.51	Spring, 1,1x8x20 mm Sst.	1				10
36	60.1281.31	Micro-switch piston, brass	1				10
37	60.1202.84	Valve regulating knob, PA black (1)	1				5
38	14.3582.00	Washer, 30,5x42x2 mm (1)	1				10
39	60.2254.31	Ring nut, M30 brass (1)	1				10
40	29.0096.24	Casing kit -PR5, complete 40bar	1				5

Kit	P/N	Description	Q.ty
K1	60.1212.24	Repair kit -VB8, 9x1pcs.	1

(1) 60.1290.00