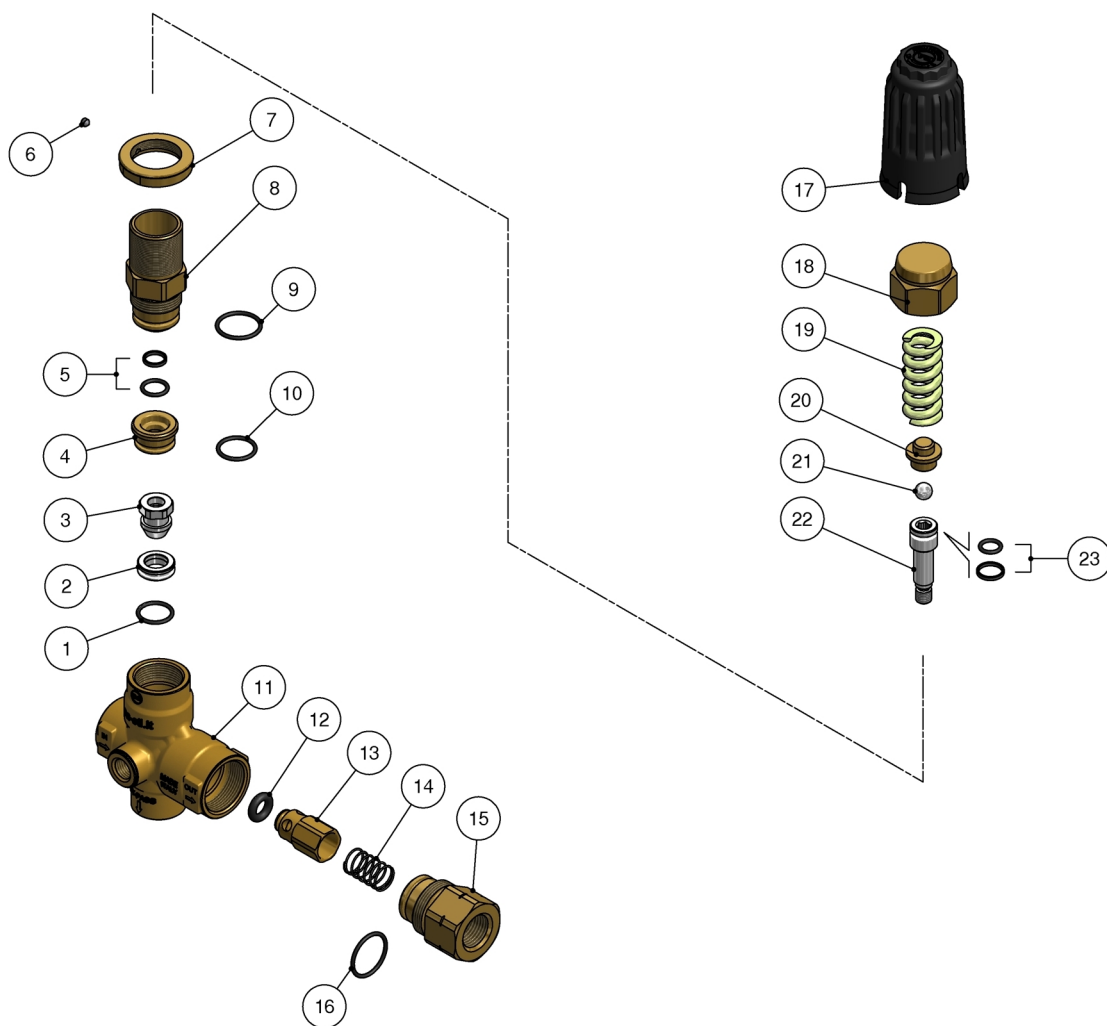


60.1850.00 VB33 unload. 1/2F Bsp brass
60.1850.50 VB33 unload. 1/2F Npt brass

60.1860.00 VB36-350 unload. 1/2F Bsp brass
60.1860.50 VB36-350 unload. 1/2F Npt brass



Pos.	P/N	Description	Q.ty	K1	K2	K3	K4
1	10.3066.01	O-ring, 1,78x15,6 mm Ni 85	1				10
2	60.1809.51	Seat, 11,6x19x6 mm Sst.	1				5
3	60.1808.51	Shutter pin, M8 Sst.	1				3
4	60.1810.31	Spacer ring, 10,3x23,4x12,5 mm brass	1				5
5	60.0979.24	Stem seal, 10x14,9x2,2 mm+O-ring	1				5
6	16.2100.00	Set screw, DIN914 M4x4 mm	1				10
7	60.1728.31	Ring nut, M27x1 brass	1				3
8	60.0973.31	Piston holder, brass (1,2)	1				3
8	60.1805.31	Piston holder, brass (3,4)	1				3
9	10.3072.01	O-ring, 1,78x20,35 mm Ni 85	1				10
10	10.3068.01	O-ring, 1,78x17,17 mm Ni 85	1				10
11	60.1855.35	Brass VB33 body -1/2 Bsp F (1,3)	1				3
11	60.1851.35	Brass VB33 body (2,4)	1				3
12	10.3292.00	O-ring, 4x8 mm	1				10

Pos.	P/N	Description	Q.ty	K1	K2	K3	K4
13	60.0488.99	Shutter pin, brass+or 4x8 mm	1				5
14	60.0489.51	Spring, 0,8x13,3x27 mm Sst.	1				5
15	60.2809.31	Shutter coupl., 1/2F Bsp brass (1,3)	1				3
15	60.1852.31	Shutter coupl., 1/2F Npt brass (2,4)	1				3
16	10.3072.60	O-ring, 1,78x21,95 mm Ni 85	1				10
17	60.1726.84	Valve regulating knob, PA black (1,2)	1				10
17	60.1729.84	Valve regulating knob, PA red (3,4)	1				10
18	60.1727.31	Valve regulating insert, brass	1				5
19	60.0975.61	Spring, 4,2x19,7x42 mm z.pl. (1,2)	1				10
19	60.1812.61	Spring, 4,5x15,8x47mm (3,4)	1				3
20	60.1813.31	Spring rest pin, brass	1				5
21	14.7443.10	Ball, 11/32" Sst.	1				10
22	60.1806.51	Piston, M8 Sst.	1				3
23	60.0978.24	Piston seal, 9x14x2,2 mm+O-ring	1				5

(1) 60.1850.00 (2) 60.1850.50 (3) 60.1860.00 (4) 60.1860.50