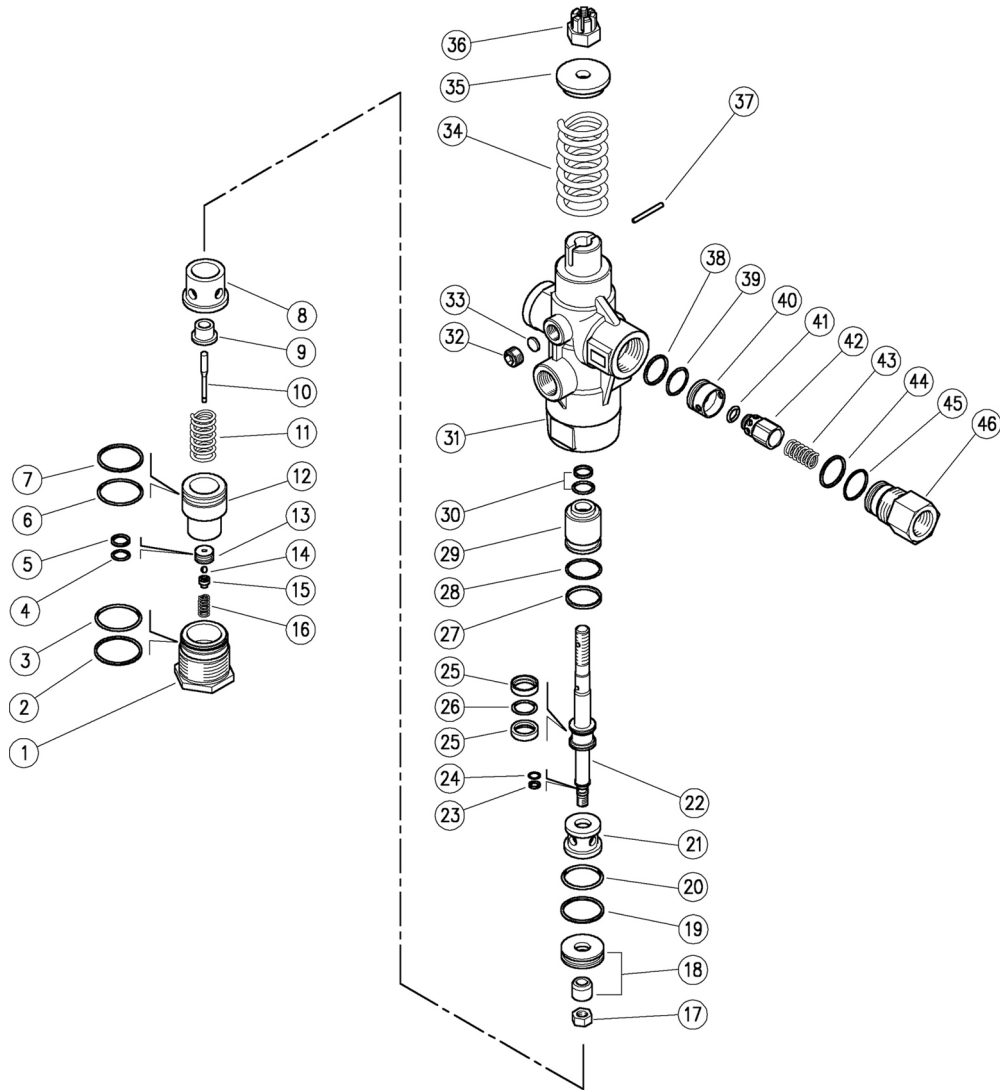


60.8000.00 VB16 unload. 1/2F Bsp



Pos.	P/N	Description	Q.ty	K1	K2	K3	K4	Pos.	P/N	Description	Q.ty	K1	K2	K3	K4
1	60.8003.31	Plug, M38x1 brass	1				3	24	10.3018.08	O-ring, 1,5x6 mm Ni 85	1				10
2	10.4089.00	Back-up ring, 32,7x35,5x1,5 mm	1				5	25	10.4094.00	Back-up ring, 15,5x20x5 mm	2				5
3	10.3078.08	O-ring, 1,78x31,45 mm Ni 85	1				10	26	10.3180.08	O-ring, 2,62x15,08 mm Ni 85	1				10
4	10.3058.02	O-ring, 1,78x10,82 mm Ni 85	1				10	27	10.4087.00	Back-up ring, 23,5x26,5x2,5 mm	1				5
5	10.4090.00	Back-up ring, 11,2x14x1,5 mm	1				10	28	10.3073.08	O-ring, 1,78x23,52 mm Ni 85	1				10
6	10.3077.28	O-ring, 1,78x29,87 mm Ni 85	1				10	29	60.8010.51	Spacer ring, 12,2x26,5x33,5 mm Sst.	1				3
7	10.4088.00	Back-up ring, 31,2x34x1,5 mm	1				5	30	10.2012.00	Stem seal, 12x19x2,8 mm +O-ring	1				5
8	60.8012.51	Spacer ring, 14,5x34x27,5 mm Sst.	1				3	31	60.8001.35	Housing -VB16, 1/2F Bsp brass	1				1
9	60.8016.31	Spacer ring, 5,2x19x12,5 mm brass	1				3	32	60.0022.31	Grub screw, brass 1/4 Bsp	1				5
10	60.8022.51	Piston, 5x43,8 mm Sst.	1				3	33	11.6500.09	Plate, 10,9x1,5 mm Cu	1				5
11	60.8004.51	Spring, 3,5x17,5x29 mm Sst.	1				3	34	60.8005.61	Spring, 7x42,5x48 mm z.pl.	1				3
12	60.8013.31	Seat holding spacer, brass	1				3	35	60.8017.31	Spring guiding washer, brass	1				3
13	60.8015.51	Seat, 3x14x7,5 mm Sst.	1				5	36	60.8018.61	Valve regulating nut, M10 z.pl.	1				3
14	14.7418.71	Ball, 5/32"	1				5	37	15.1042.00	Roll pin, 3x26 mm Sst.	1				10
15	60.8014.51	Ball holding piston, Sst.	1				5	38	10.4091.00	Back-up ring, 21,2x24x1,5 mm	1				5
16	60.8006.51	Spring, 1x7,2x14 mm Sst.	1				3	39	10.3072.01	O-ring, 1,78x20,35 mm Ni 85	1				10
17	11.4574.11	Hex. nut, M8, Sst.	1				10	40	60.8019.51	Shutter seat, Sst.	1				3
18	60.8023.24	Seat, 14mm Sst. + shutter pin, Sst.	1				1	41	10.3292.08	O-ring, 4x8 mm Ni 85	1				10
19	10.4085.00	Back-up ring, 29,2x32 mm	1				5	42	60.8020.51	Pin, hex.17 Sst	1				3
20	10.3077.08	O-ring, 1,78x28,3 mm Ni 85	1				10	43	60.8007.51	Spring, 0,8x12,2x27 mm Sst.	1				3
21	60.8011.31	Spacer ring,	1				3	44	10.3072.60	O-ring, 1,78x21,95 mm Ni 85	1				10
22	60.8002.51	Piston, M8-M10 Sst.	1				3	45	10.4092.00	Back-up ring, 22,7x25,5x1,5 mm	1				5
23	10.4086.00	Back-up ring, 6,3x8,5x1,5 mm	1				5	46	60.8021.31	Shutter coupl., 1/2F Bsp brass	1				3

Kit	P/N	Description	Q.ty
K1	60.8025.24	Spares kit -VB16, 24x1pcs.	1