



EQUIPAGGIAMENTI  
TECNICI  
LAVAGGIO

REGOLATORE PER VAPORE  
STEAM VALVE  
**RV1**

①  
GB

2

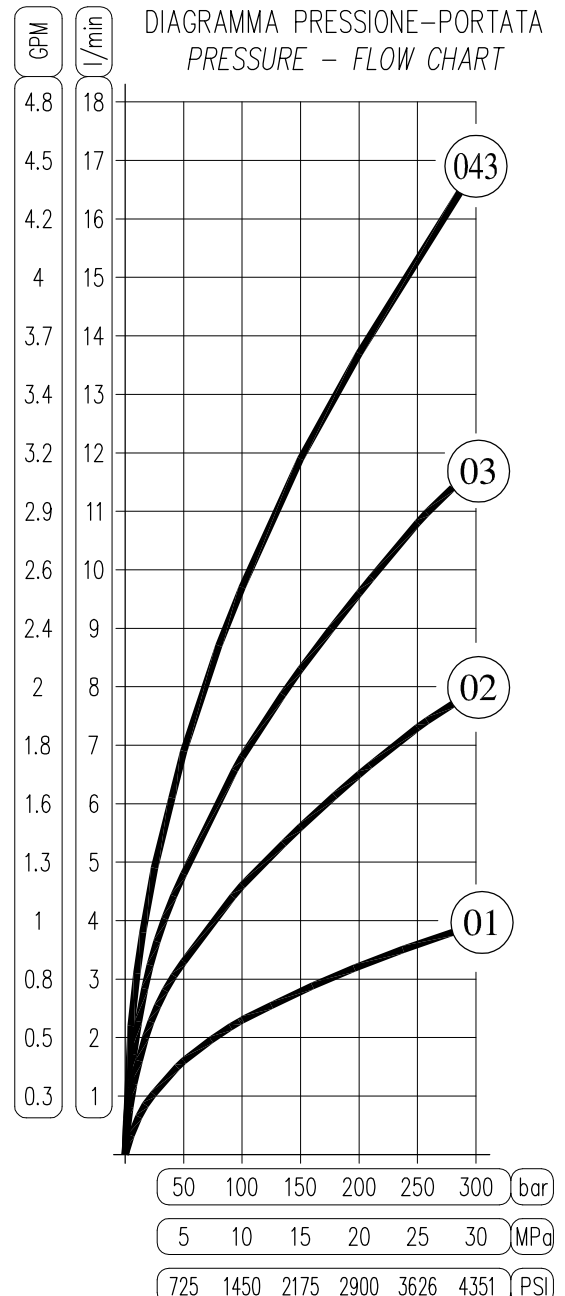
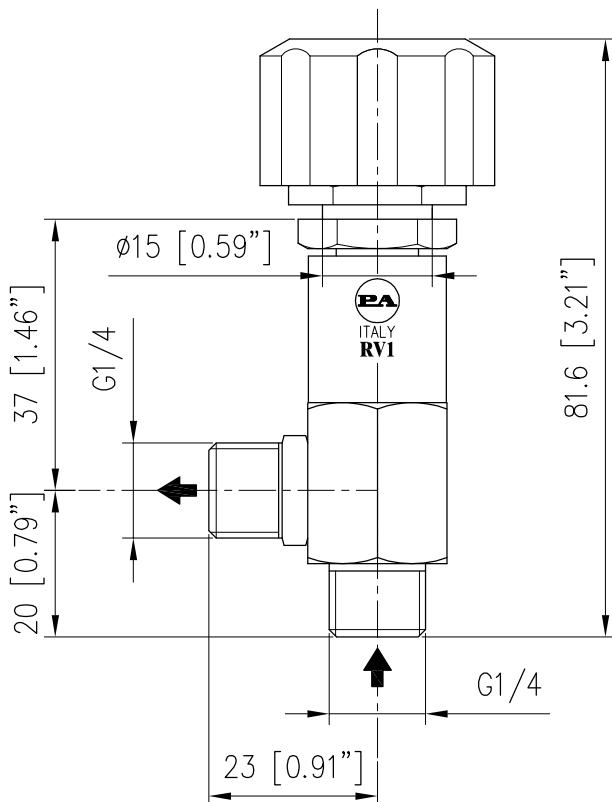
22/03/10

SPECIFICHE TECNICHE - SPECIFICATIONS

- PRESSIONE NOMINALE RATED PRESSURE	250 bar - 25 MPa (3650 psi)
- PRESSIONE CONSENTITA PERMISSIBLE PRESSURE	280 bar - 28 MPa (4050 psi)
- TEMPERATURA CONSENTITA RATED TEMPERATURE	80° C (175 °F)
- ATTACCO PANNELLO PANEL FITTING	ø15 mm (3/5 inch.)
- MATERIALE MATERIAL	CORPO IN OTTONE E PISTONE E SEDE IN ACCIAIO INOX CON MANOPOLA IN PLASTICA ANTIURTO BRASS BODY AND STAINLESS STEEL PISTON + SEAT WITH SHOCKPROOF PLASTIC HANDLE

MISURE D'INGOMBRO - OVERALL DIMENSIONS

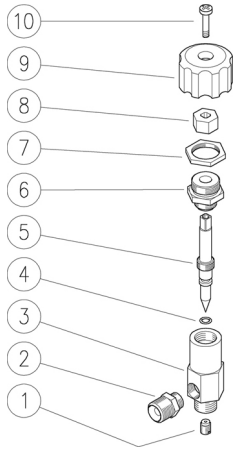
CODICE CODE	ø UGELLO ø NOZZLE mm [inch.]	MISURA UGELLO NOZZLE SIZE	● PORTATA MASSIMA CON RUBINETTO COMPLETAMENTE APERTO. IL VALORE DELLA PORTATA HA TOLLERANZA ±10% MAX FLOW RATE WHEN TAP IS FULLY OPEN. FLOW RATE FIGURE HAS A ±10% ALLOWANCE.
29.0920.08	ø0.8 [0.03"]	01	
29.0920.12	ø1.2 [0.05"]	02	
29.0920.15	ø1.5 [0.06"]	03	
29.0920.70	ø2.0 [0.08"]	043	



29.0920.08 RV1 regolatore vap. G1/4MM d.0,8mm

29.0920.12 RV1 regolatore vap. G1/4MM d.1,2mm

29.0920.15 RV1 regolatore vap. G1/4MM d.1,5mm



29.0920.20 RV1 rub.vap.m.rossa G1/4MM d.2,0mm

29.0920.65 RV1 regolatore vap. G1/4MM d.1,5mm nero

29.0920.82 RV1 regolat. vap.G1/4MM d.1,2mm-man.blù

Pos.	Codice	Descrizione	Q.tà	K1	K2	K3	K4	
1	29.0941.51	Ugello 0,8 mm M6x8 inox (1)	1	•				5
1	29.0942.51	Ugello 1,2 mm M6x8 inox (2,3)	1	•				5
1	29.0943.51	Ugello 1,5 mm M6x8 inox (4,5)	1	•				5
1	29.0944.51	Ugello 2,0 mm M6x8 inox (6)	1					5
2	29.0926.31	Racc. G1/4M-G1/8M svas. ott. (6)	1					10
3	29.0921.31	Cassa RV1 G1/4M ott.	1					10
4	10.3043.01	An.OR 1,78x4,48 mm Vi 70	1	•				10
5	29.0922.51	Perno otturatore M10x1 inox	1					5
6	29.0923.31	Nipplo G3/8M-Gc1/4M ott.	1					5
7	29.0932.31	Controdado G3/8F ott.	1					10
8	29.0924.31	Dado scanalato ott.	1					10
9	29.0931.84	Manopola PA nera (5)	1					10
9	29.0930.84	Manopola PA blu (5,3)	1					10
9	29.0927.84	Manopola PA rossa (1,2,4,6)	1					10
10	16.1840.00	Vite DIN7985 M4x14 mm zinc.	1					10

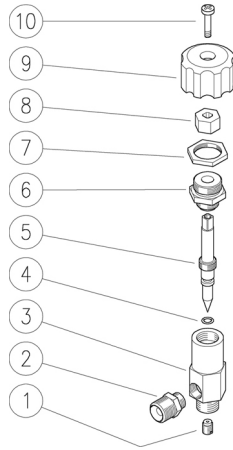
Kit	Codice	Descrizione	
K1	29.0934.24	Kit ric. RV1 2x4pz.	1

(1) 29.0920.08 (2) 29.0920.12 (3) 29.0920.82 (4) 29.0920.15 (5) 29.0920.65  
 (6) 29.0920.20

29.0920.08 RV1 steam val. 1/4MM Bsp d.0,8mm

29.0920.12 RV1 steam val. 1/4MM Bsp d.1,2mm

29.0920.15 RV1 steam val. 1/4MM Bsp d.1,5mm




29.0920.20 RV1 steam valv.2,0mm red hand.

29.0920.65 RV1 steam val. 1/4MM Bsp d.1,5mm black

29.0920.82 RV1 steam val.1/4MM Bsp d.1,2mm-blue han.

Pos.	P/N	Description	Q.ty	K1	K2	K3	K4	
1	29.0941.51	Nozzle, 0,8 mm M6x8 Sst. (1)	1	•				5
1	29.0942.51	Nozzle, 1,2 mm M6x8 Sst. (2,3)	1	•				5
1	29.0943.51	Nozzle, 1,5 mm M6x8 Sst. (4,5)	1	•				5
1	29.0944.51	Nozzle, 2,0 mm M6x8 Sst. (6)	1					5
2	29.0926.31	Coupling, 1/4M-1/8M Bsp c/sunk brass (6)	1					10
3	29.0921.31	Casing -RV1, 1/4Bsp M brass	1					10
4	10.3043.01	O-ring, 1,78x4,48 mm Vi 70	1	•				10
5	29.0922.51	Shutter pin, M10x1 Sst.	1					5
6	29.0923.31	Nipple, 3/8Bsp M-1/4Bspt M brass	1					5
7	29.0932.31	Locknut, 3/8Bsp F brass	1					10
8	29.0924.31	Groove nut, brass	1					10
9	29.0931.84	Knob, PA black (5)	1					10
9	29.0930.84	Knob, PA blue (5,3)	1					10
9	29.0927.84	Knob, PA red (1,2,4,6)	1					10
10	16.1840.00	Screw, DIN7985 M4x14 mm z.pl.	1					10

Kit	P/N	Description	
K1	29.0934.24	Spares kit -RV1, 2x4pcs.	1

(1) 29.0920.08 (2) 29.0920.12 (3) 29.0920.82 (4) 29.0920.15 (5) 29.0920.65  
 (6) 29.0920.20

## **P.A. SpA EQUIPAGGIAMENTI TECNICI DEL LAVAGGIO**

Via Milano, 13 42048 Rubiera - (RE) ITALY  
Tel +39 0522 623611 (ric aut) - Fax +39 0522 629600  
*Info@pa-etl.it - www.pa-etl.it*

---

**COMPANY WITH  
QUALITY SYSTEM  
CERTIFIED BY DNV**

**= ISO 9001 =**