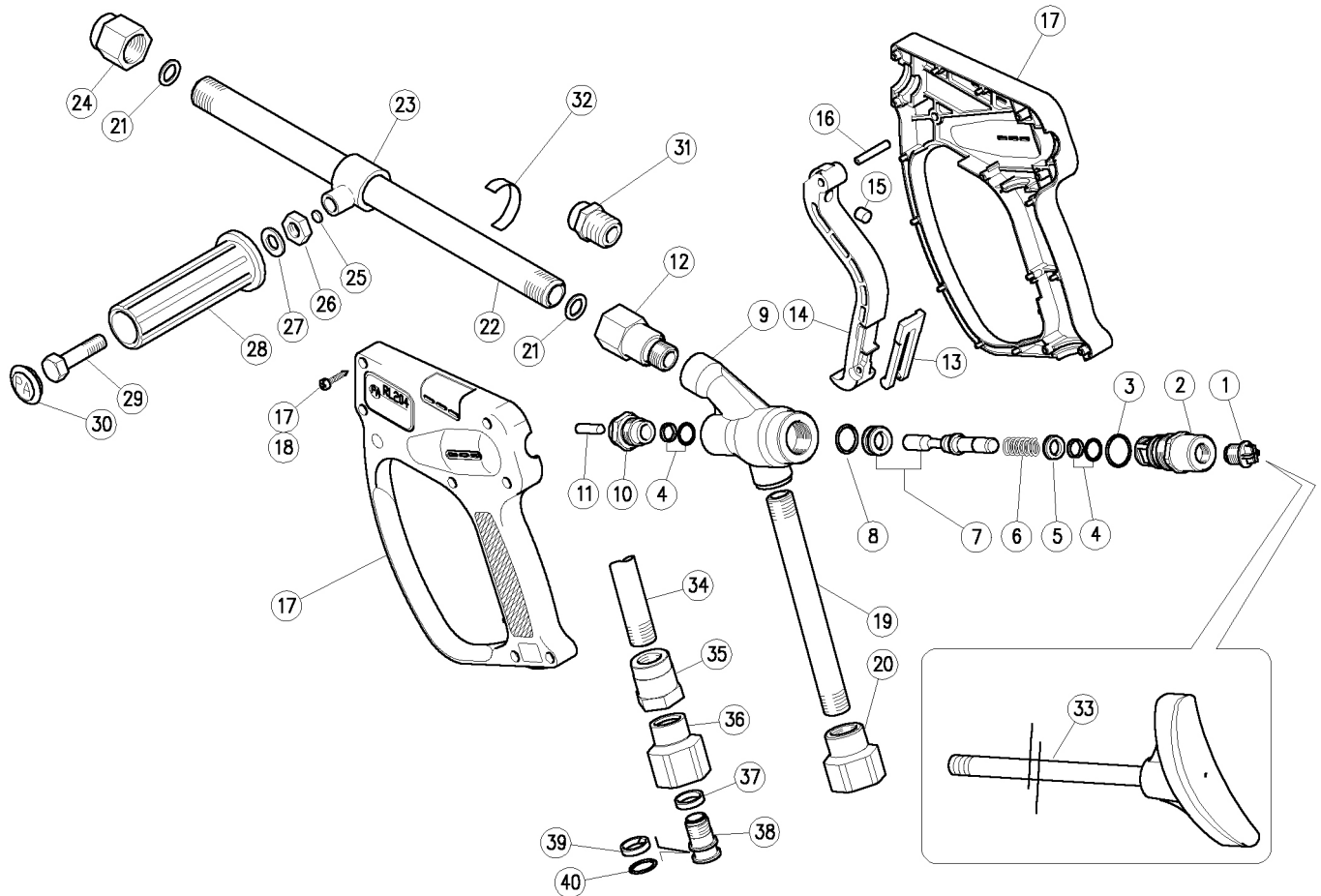


30.5200.00 RL 204 spr.gun 3/4F-1/2F Bsp



Pos.	P/N	Description	Q.ty	K1	K2	K3	K4	
1	30.5815.84	Plug, 1/4M Bsp DIN259 Plast. black	1					10
2	30.4037.31	Spring holder, 1/4F Bsp-M26x1M brs.	1					5
3	10.3072.01	O-ring, 1,78x20,35 mm Ni 85	1	•				10
4	10.2027.00	Stem seal, 10x15x2,2 mm +O-ring	2	•				4
5	30.4040.31	Spacer ring, 10,1x15,8x3,8 mm brass	1					3
6	30.4042.51	Spring, 2,4x15,3x30 mm Sst.	1	•				10
7	30.4045.24	Piston+Seat Kit, -RL204	1	•				1
8	10.3068.01	O-ring, 1,78x17,17 mm Ni 85	1	•				10
9	30.5205.35	Housing -RL204, brass	1					1
10	30.4038.31	Front plug, M18x1,5 brass	1					10
11	30.4041.31	Parallel pin, 6x25,8 mm brass	1					3
12	30.5306.51	Coupling, 1/2 Bsp Sst.	1					3
13	30.1510.84	Safety latch, PA red	1					10
14	30.5303.84	Trigger, black	1					5
15	30.0675.51	Stop pin, 8x7,1mm Sst.	1					10
16	30.2517.31	Parallel pin, 5x27,5 mm brass	1					10
17	30.5212.24	Casing-kit -RL 204 +screws	1					1
18	16.3075.51	S/tapping screw, DIN7981 3,5x18 mm Sst.	7					10
19	30.5104.56	Tube, M18x1,5 138,5 mm Sst.	1					5
20	30.5204.51	Coupling, 3/4" Bsp Sst.	1					3
21	14.3802.00	Washer, 12x18x1,5 mm Cu **	2					10
22	30.5016.56	Tube, 1/2Bsp MM 390 mm Sst. **	1					1
22	30.5026.56	Tube, 1/2Bsp MM 790 mm Sst. **	1					1
22	30.5037.56	Tube, 1/2Bsp MM 1250mm Sst. **	1					1
23	30.5017.35	Tube fastener, 1/2" Bsp	1	•				5
24	30.5015.51	Nozzle Holder, 1/2F Bsp-1/4F Npt Sst.	1					3
25	13.5305.00	Plate, 8x1,5 mm Cu	2	•				10
26	11.4627.00	Hex. nut, M10	1	•	•			10
27	14.3799.00	Washer, 10x21x2 mm	1	•	•			10
28	41.0409.84	Knob, 32x115 mm PP black	1	•	•			5
29	16.2035.00	Screw, DIN933 M10x35 mm z.pl.	1	•	•			10
30	41.0411.84	Plug, Knob PP black	1	•	•			5
31	30.5018.51	Nzl.holder,sst, RL84-RL204 1/2M Bsp **	1					1
32	15.3815.00	Label "56MPa Tubo inox - PA"	1					1
33	30.5060.00	Shoulder rest -RL600 1/4M Bsp 300mm **	1					1

** On request

Kit	P/N	Description	
K1	30.4046.24	Spares kit -RL204, 6x1pcs.	1
K2	30.5038.24	Spares kit -Lance knob	1
K3	30.4019.24	Knob-kit, M10x35	5