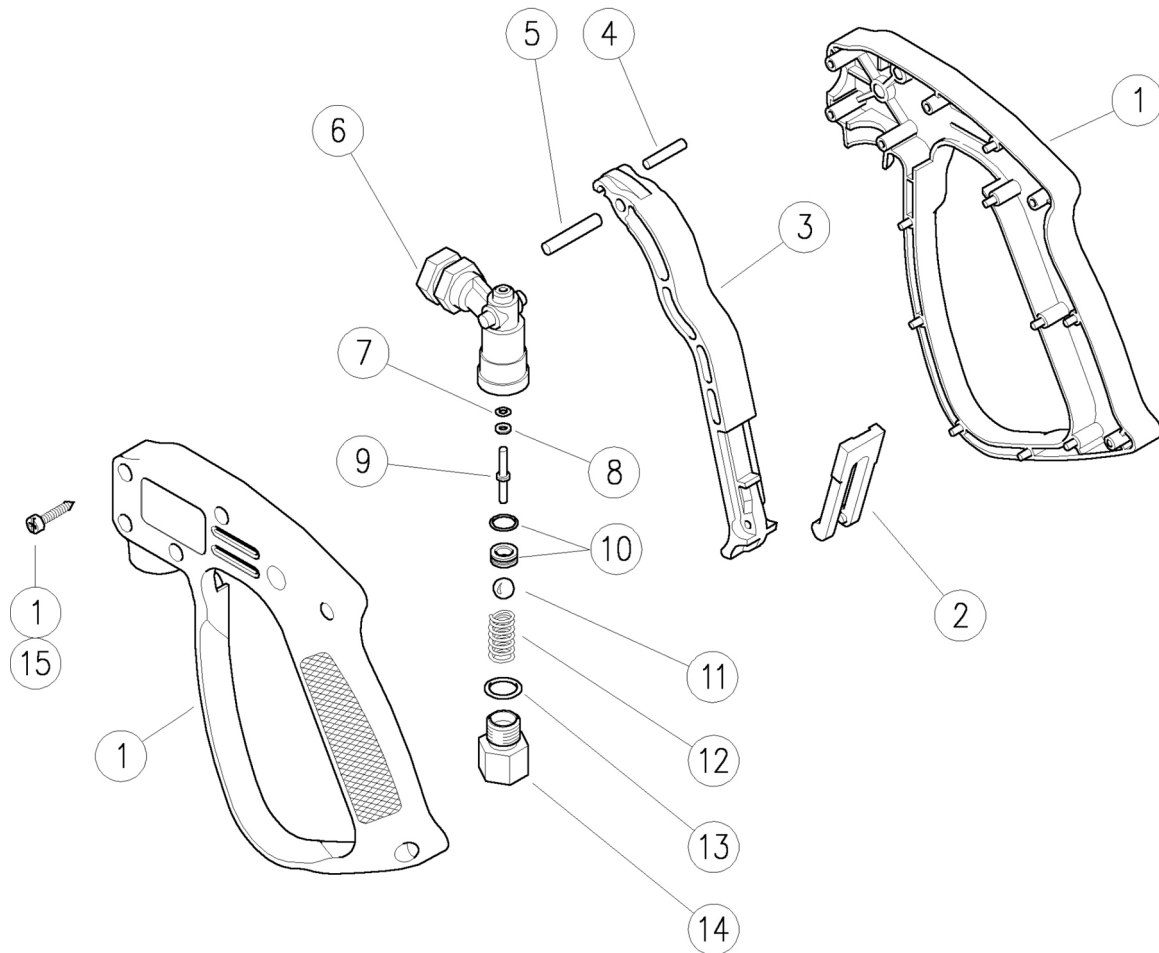


30.0100.00 RL20 spr.gun 3/8F-1/4F Bsp
 30.0100.20 RL20 spr.gun 1/4FF Bsp
 30.0100.40 RL20 spr.gun A M22-1/4F Bsp

30.0100.50 RL20 spr.gun 3/8F-1/4F Npt
 30.0100.60 RL20 spr.gun 3/8M-1/4F Bsp



Pos.	P/N	Description	Q.ty	K1	K2	K3	K4	Pos.	P/N	Description	Q.ty	K1	K2	K3	K4
1	30.0108.24	Casing-kit -RL20 +screws	1				1	10	30.0106.20	Seat, 6 mm+O-ring 1mm NBR85	1	•			10
2	30.1510.84	Safety latch, PA red	1				10	11	14.7448.00	Ball, 5/16" Sst.	1	•			10
3	30.0018.84	Trigger -RL16-20, PA black	1				10	12	30.0001.51	Spring, 1,4x7,8x13,5 mm Sst.	1				10
4	30.0020.51	Parallel pin, 4x16 mm Sst.	1				10	13	10.3058.02	O-ring, 1,78x10,82 mm Ni 85	1	•			10
5	30.0509.31	Parallel pin, 5x24,5 mm brass	1				10	14	30.0103.31	Nipple, 1/4M-3/8F Bsp brass (2)	1				5
6	30.0017.35	Housing -RL16-20, 1/4F Bsp brass	1				3	14	30.0023.31	Nipple, 1/4Bsp MF brass (3)	1				3
6	30.0012.35	Housing -RL16-20, 1/4F Npt brass (1)	1				5	14	30.0105.31	Nipple, 1/4M Bsp-M22x1,5 M brass (4)	1				5
7	10.4035.00	Back-up ring, 3,1x6x1 mm	1	•			10	14	30.0104.31	Nipple, 1/4M-3/8M Bsp c/sunk brass (5)	1				5
8	10.3036.10	O-ring, 1,78x2,9 mm Vi 70	1	•			10	14	30.0012.35	Housing -RL16-20, 1/4F Npt brass (1)	1				5
9	30.0019.51	Piston, 3 mm Sst.	1	•			10	15	16.3077.00	S/tapping screw, DIN7981 3,5x18 mm	6				10

Kit	P/N	Description	Q.ty
K1	30.0109.24	Spares kit -RL20, 7x1pcs.	1

(1) 30.0100.50 (2) 30.0100.00 (3) 30.0100.20 (4) 30.0100.40 (5) 30.0100.60