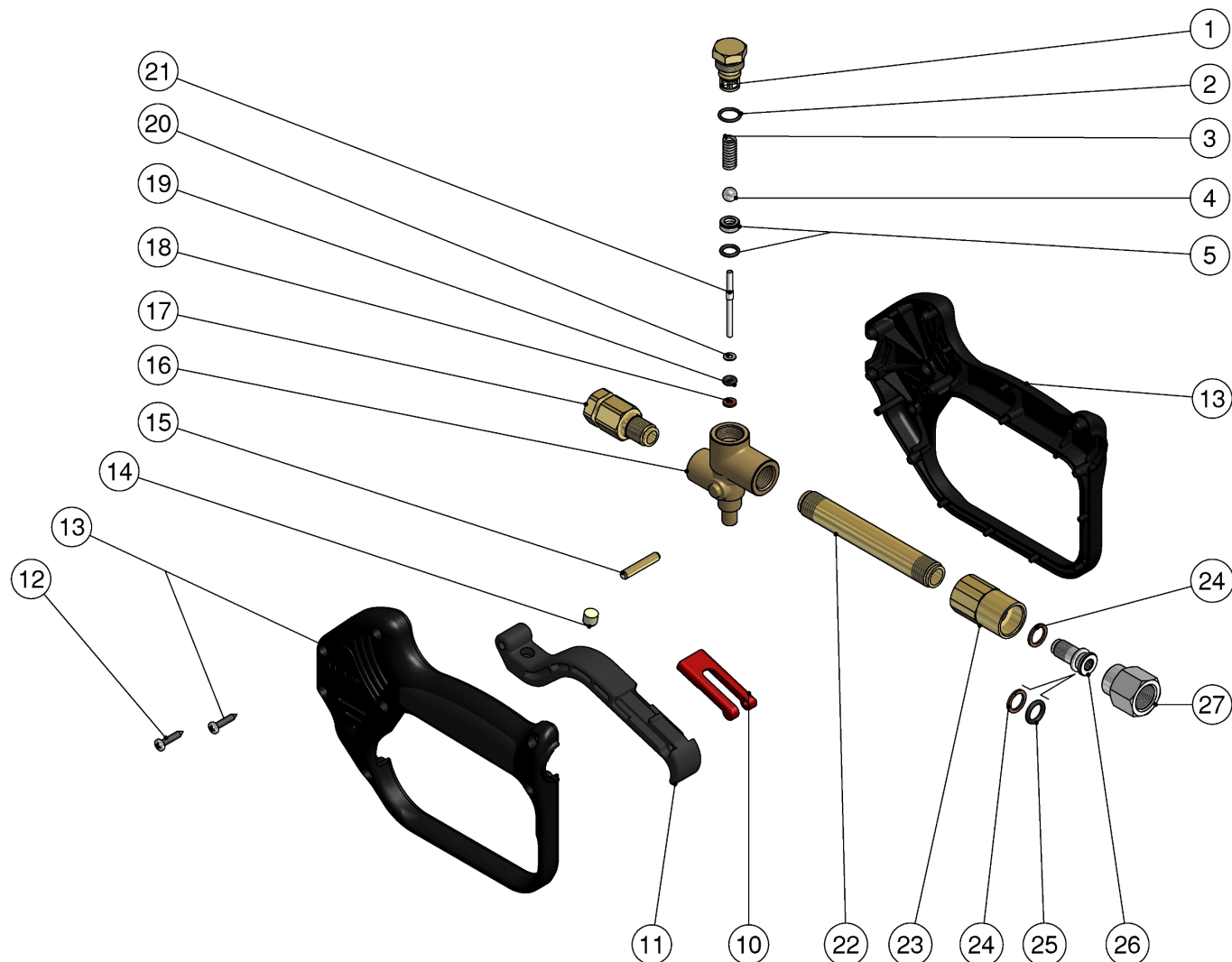


30.0640.00 Linear 3 spr.gun +sw6-3/8F-1/4F Bsp



Pos.	P/N	Description	Q.ty	K1	K2	K3	K4	
1	30.2595.31	Spring plug, M16x1 brass	1					10
2	10.3020.02	O-ring, 1,5x10 mm Ni 85	1	•				10
3	30.2596.51	Spring, 1,5x6,1x23 mm Sst.	1					10
4	14.7448.00	Ball, 5/16" Sst.	1	•				10
5	30.1708.20	Seat, 6mm Sst.+O-ring 1,78mm NBR85	1	•				10
10	30.1510.84	Safety latch, PA red	1					10
11	30.2506.84	Trigger -RL31, PA black	1					10
12	16.3077.00	S/tapping screw, DIN7981 3,5x18 mm	7					10
14	30.0675.84	Stop pin, 8x7,1mm PA	1					10
13	30.0631.24	Casing-kit -LINEAR3, +screws	1					1
14	30.0675.84	Stop pin, 8x7,1mm PA	1					10
15	30.2517.31	Parallel pin, 5x27,5 mm brass	1					10

Pos.	P/N	Description	Q.ty	K1	K2	K3	K4	
16	30.0625.35	Housing -Linear 3, brass	1					2
17	30.0606.31	Tube, 1/4F Bsp 44 mm brass	1					10
18	10.4018.00	Back-up ring, 3,2x7,5x1,2 mm	1	•				10
19	10.3165.00	O-ring, 2,62x2,84 mm Vi 70	1	•				10
20	14.3511.00	Washer, 3,2x7x0,5 mm sst.	1					10
21	30.2516.51	Piston, 3 mm Sst.	1	•				10
22	30.2547.36	Tube, M15 MM 103mm brass	1					5
23	30.2546.31	Adapt., M15F-M10x1F brass	1					5
24	10.4010.01	Back-up ring,10,2x13,9x1,2mm	2					50
25	10.3171.10	O-ring, 2,62x9,19 mm Vi 70	1					10
26	30.2017.51	Pin, SW M10x1 M Sst.	1					5
27	30.2019.31	Coupl., 3/8F Bsp brass	1					5

Kit	P/N	Description	
K1	30.2559.24	Spares kit -RL30, 6(7)x1pcs.	1