

KODIAK POWER EQUIPMENT PWP3SWT

Technical Manual



Specifications / Reference

	PWP3SWT
Port Size	3" NPT
Seal Material	Silicon Carbide
Impeller Material	Cast Iron
Volute Material	Cast Iron
Pump Casing Material	Aluminum
Suction Lift ft (m)	26 (8)
Max Head ft (m)	92 (28)
Max Flow gpm (lt/min)	343 (1300)
Solids Capacity in (mm)	1.2 (31)
Weight lbs (kg)	132 (60)
size inches (mm) LxWxH	29.5x20.8x25.7 (749x528x652)
Engine	Honda GX240
Engine Spec #	K1WKT2
Engine type	4 stroke
oil Alert	Yes
Engine output hp(kw)	8 (5.9)
Fuel Tank Capacity gal (l)	1.69 (6.4)

Centrifugal Pump Reference Information

Losses due to hose friction

Hose Friction losses					
Pressure Drop in psi per 100 ft of hose with typical flow rates					
Water Flow (gpm)	1"	1.5"	2"	3"	4"
10	7				
20	26				
30	56	8			
40	96	13			
50	144	20	5		
100		72	18		
150		153	38	5	
200			64	8.9	
250			97	14	
300				19	4
350				25	6
400				32	8
450					10
500					12
550					14

Losses are expressed in feet of head loss

Values are based on the Hasen-Williams Equation and are close approximations

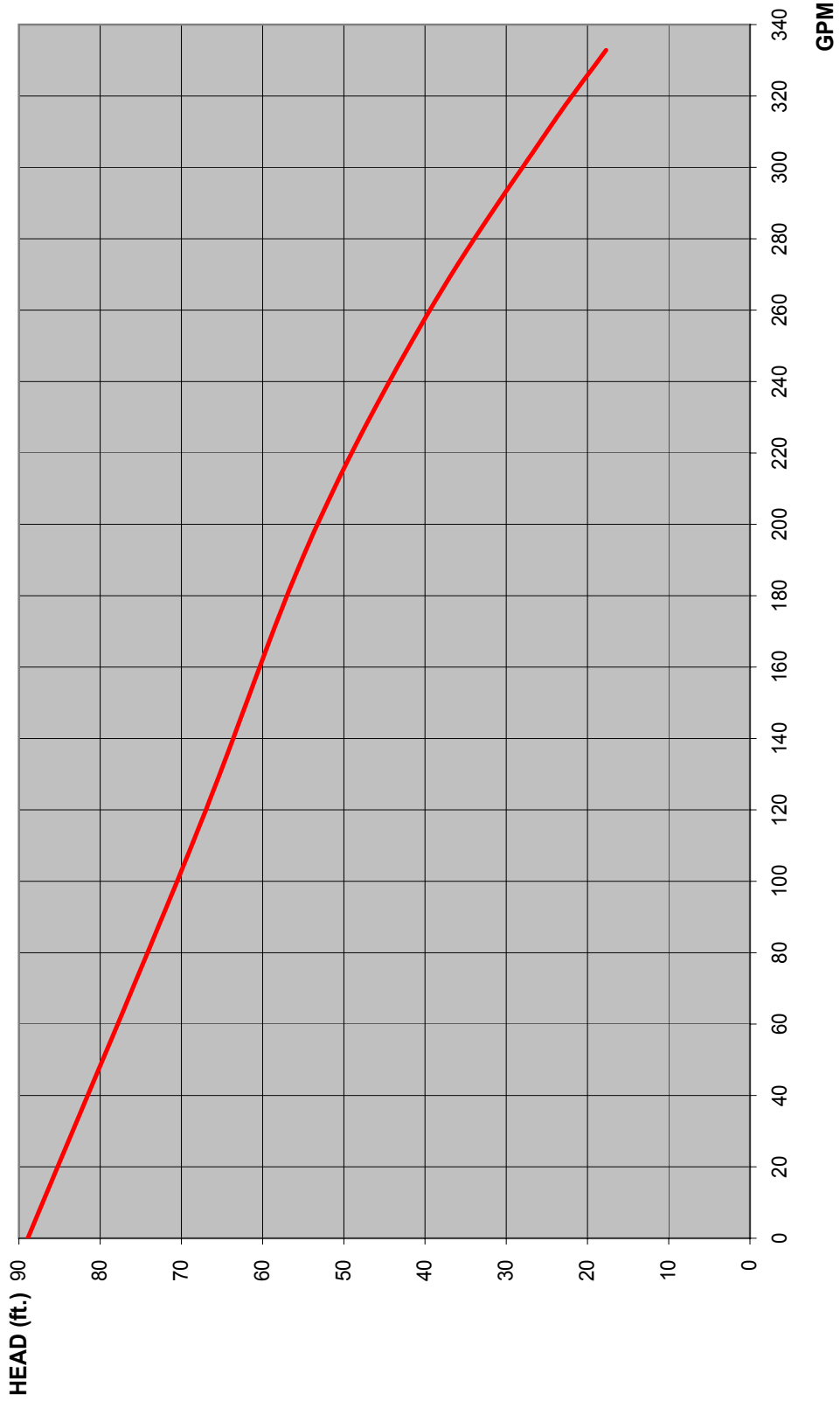
Losses due to elevation

Pressure can be designated in many units from bar (si), psi (imperial) or also in high of a water column (feet or metres). In imperial units the weight of one foot of water is equal to .4328 psi. In other words for every foot of elevation change from the discharge of the pump to the point of discharge of the hose there is a pressure of .4328 psi applied to the pump.

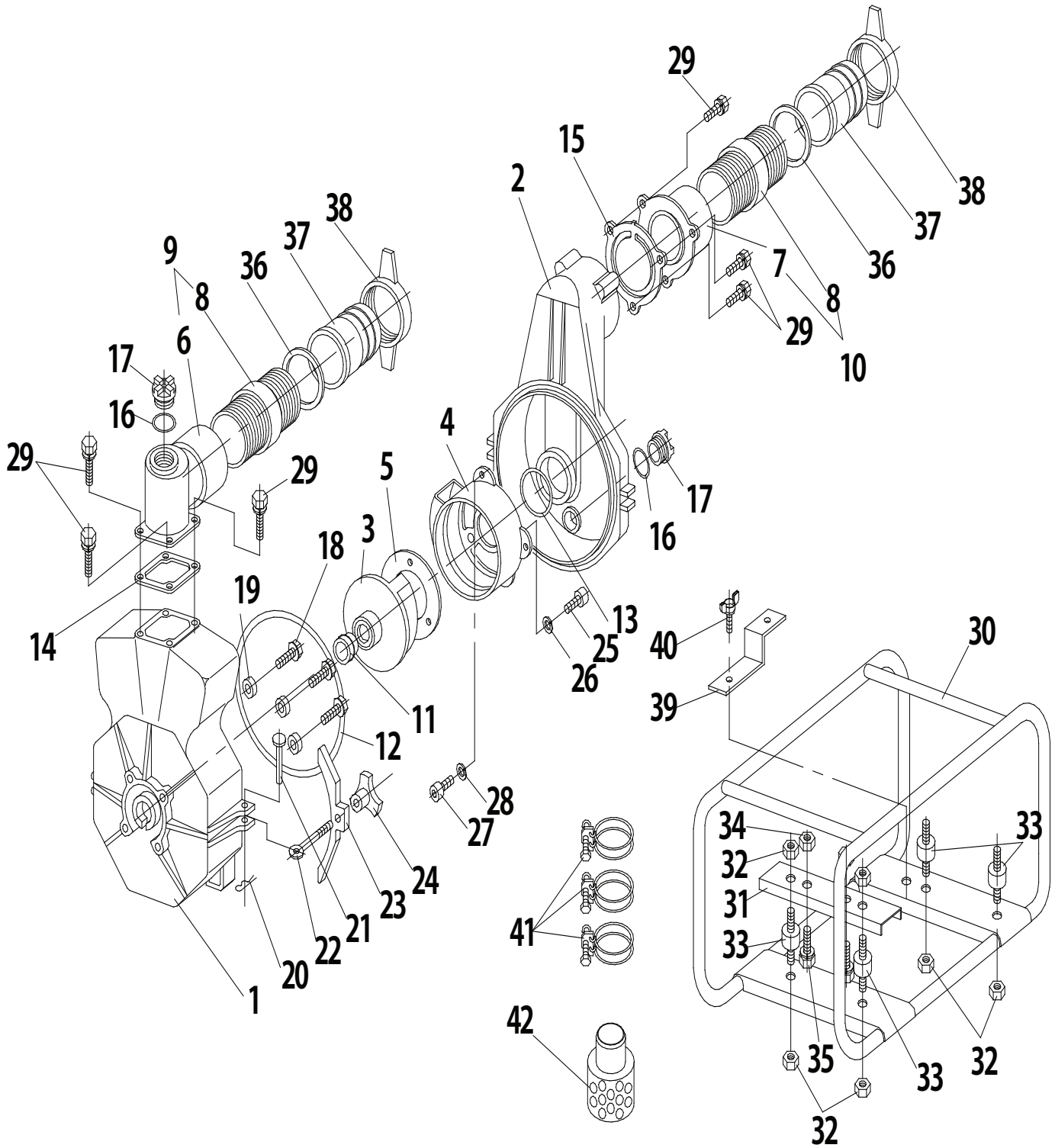
1 foot of water (head) = .4328 psi

Pump Curve PWP3SWT

PWP3SWT



Parts Illustration PWP3SWT



Parts List PWP3SWT

REF No.	Parts No.	Parts name	Q'ty	Remarks
1	821-001	CASING	1	SWT-80
2	821-002	CASING COVER	1	SWT-80
3	821-004	IMPELLER	1	
4	821-003N	INNER CASING	1	
5	821-007N	LINER	1	SWT-80
6	821-010NA	BEND	1	IN-NPSM3
7	821-009NA	VALVE CASE	1	IN-NPSM3
8	821-038	FITTING PIPE	2	3B NPT-NPT
9	-	BEND ASSY	(2)	NPT3
10	-	VALVE CASE ASSY	(2)	NPT3
11	821-008	MECHANICAL SEAL	1	3",4"T
12	821-017	O-RING	1	G-240
13	821-020	O-RING	1	G-80
14	801-020	PACKING,BEND	1	
15	821-011N	CHECK VALVE	1	
16	821-018	O-RING	2	W1516-31
17	821-012	PLUG	2	AL
18	501-005	FLANGE BOLT	4	M8x46
19	501-006	AL WASHER	4	8.2-17-3.0
20	821-034	SNAP PIN	2	φ12
21	821-014	RIVET	2	φ12
22	821-013	COVER BOLT	2	M16
23	821-016	CASING COVER HOLDER	2	
24	821-015	KNOB	2	M16
25	821-029	HEX.SOCKET BOLT	3	M6x20 SUS
26		SPRING WASHER	3	M6
27	821-039	HEX.SOCKET BOLT	3	M8x30
28		SPRING WASHER	3	M8
29	501-003	HEX.BOLT	7	M10x30(17) P=2
30	821-005H	FRAME(WHITE)	1	
31	821-005H/2	BASE,ENGINE(WHITE)	1	
32	1001-024	SPRING NUT	6	M8
33	821-019	ANTI-VIBRATION RUBBER	4	
34	1001-033	FLANGE NUT	2	M10
35	1001-023	HEX.BOLT	2	M10x45 P=2
36	801-017	PACKING,COUPLING	2	NBR
37	801-018	HOSE COUPLING	2	NBR
38	801-016A	COUPLING HANDLE	2	NPSH3
39	521-035	MULTI-PURPOSE TOOL	1	
40	521-036	WING BOLT	1	M6x15
41	801-028	HOSE BAND	3	3"
42	821-033	STRAINER	1	3"ER