



# KD5500VR

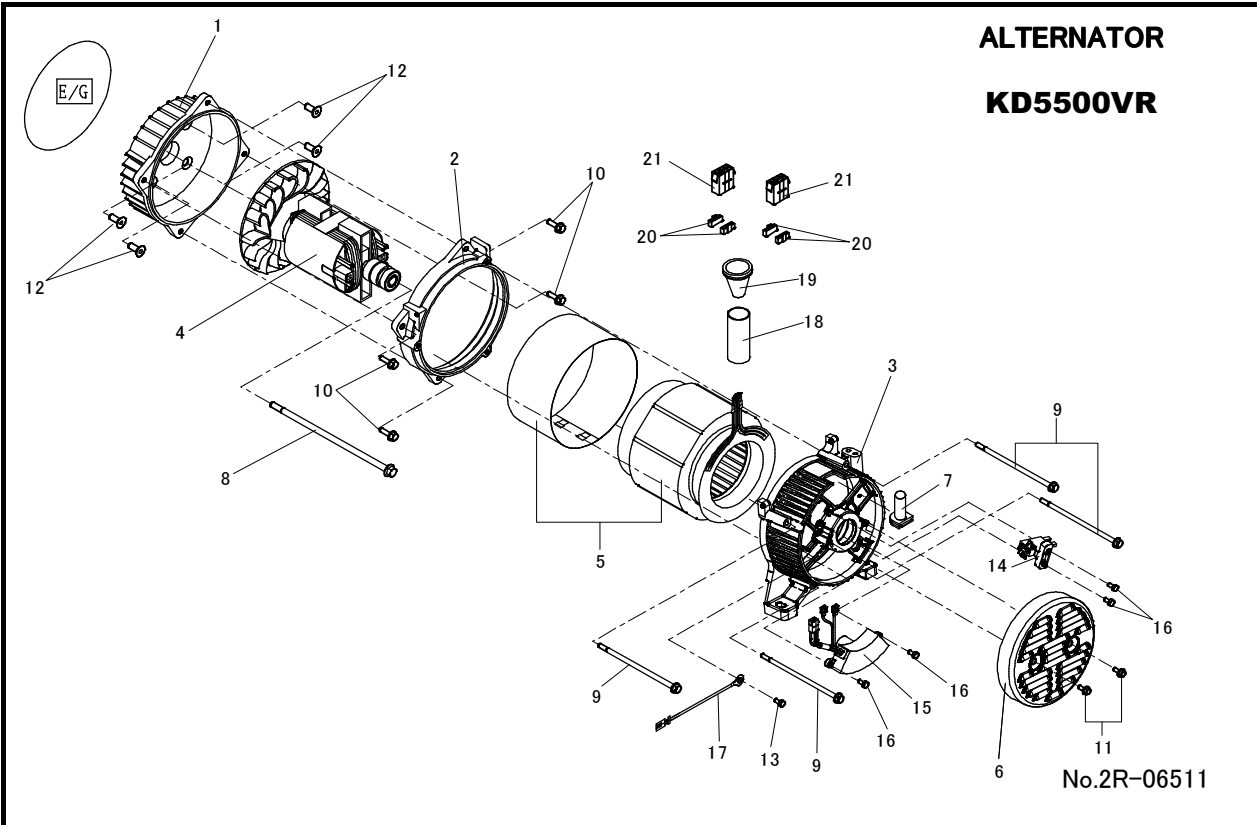
## Parts Break Down

**Dynablast** Division of John Brooks Company Limited

2625 Meadowpine Blvd, Mississauga, Ontario L5N 7K5  
Ontario/Québec/Maritimes Tel: 888-881-6667 Fax: 800-350-5666  
Alberta/Manitoba/Sask/B.C. Tel: 800-527-8592 Fax: 800-661-3719  
[www.dynablast.ca](http://www.dynablast.ca)

**ALTERNATOR**

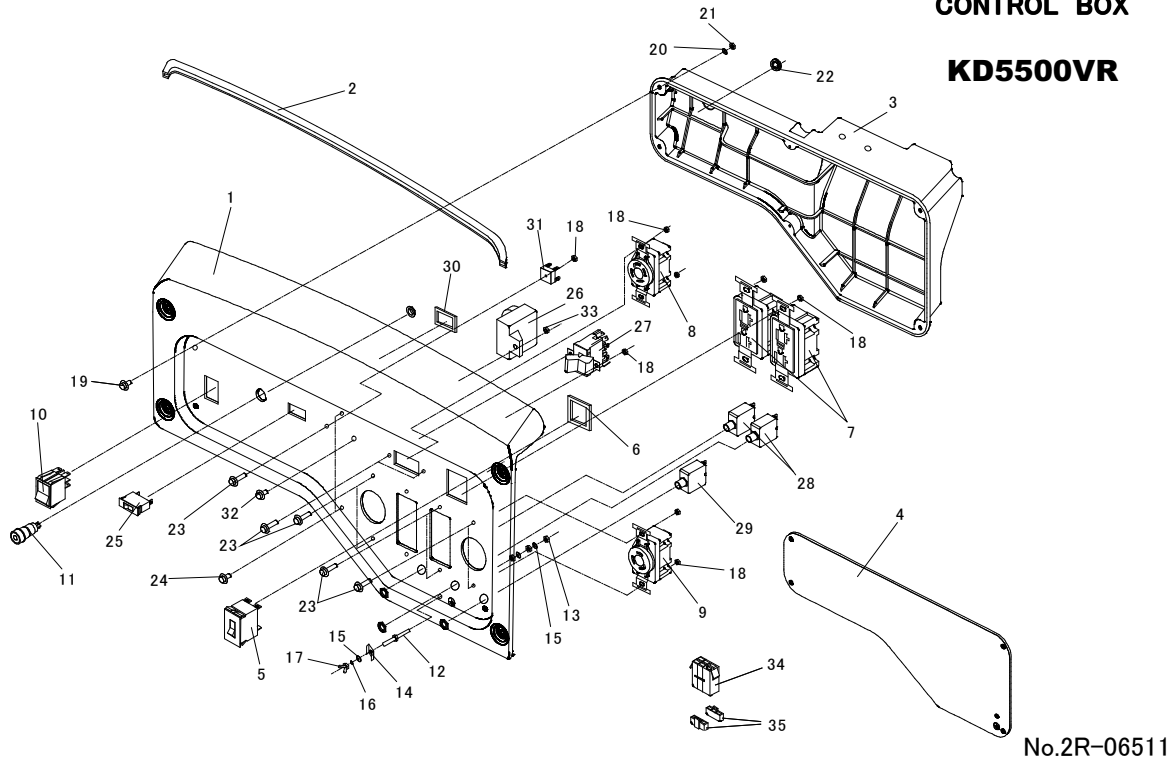
**KD5500VR**



| REF No. | Parts No.     | Parts name                          | Q'ty | Remarks  |
|---------|---------------|-------------------------------------|------|----------|
| 1       | KD15411460000 | BRACKET(1)                          | 1    |          |
| 2       | KD15311462000 | N-BRACKET                           | 1    |          |
| 3       | KD15150097000 | BRACKET(2)                          | 1    |          |
| 4       | KD15200403002 | ROTOR ASSY.                         | 1    |          |
| 5       | KD15250520002 | STATOR ASSY.                        | 1    |          |
| 6       | KD15301253000 | COVER, BRACKET                      | 1    |          |
| 7       | KD15350550000 | RUBBER BUSH                         | 1    |          |
| 8       | KD15550199000 | HEX, BOLT W/FLANGE (M10-265)        | 1    |          |
| 9       | KD15550189000 | HEX, BOLT W/FLANGE (M6-165)         | 4    |          |
| 10      | KD15550476000 | HEX, BOLT W/FLANGE (M8-20)          | 4    |          |
| 11      | KD15550240000 | HEX, BOLT W/FLANGE (M5-20)          | 2    |          |
| 12      | KD19B50908020 | HEX, BOLT W/ SOCKET, FLANGE (M8-20) | 4    |          |
| 13      | KD19S00905007 | CROSS-RECESSED HEAD SCREW (M5-7)    | 1    |          |
| 14      | KD15400197000 | BRUSH                               | 1    |          |
| 15      | KD15400220001 | AVR UNIT                            | 1    |          |
| 16      | KD15550211000 | HEX, BOLT W/FLANGE (M5-16)          | 4    |          |
| 17      | KD15501741000 | BONDING WIRE                        | 1    |          |
| 18      | KD15350107000 | PVC-THUBU (CSA)                     | 1    |          |
| 19      | KD15321880130 | GROMMET PANEL LEAD #2               | 1    |          |
| 20      | KD15400162000 | RETAINER                            | 4    |          |
| 21      | KD15400156000 | CONNECTOR 6P                        | 2    |          |
|         | KD15601759004 | ROTOR ASSY.STATOR ASSY. 5500VR      | 1    | Complete |

**CONTROL BOX**

**KD5500VR**

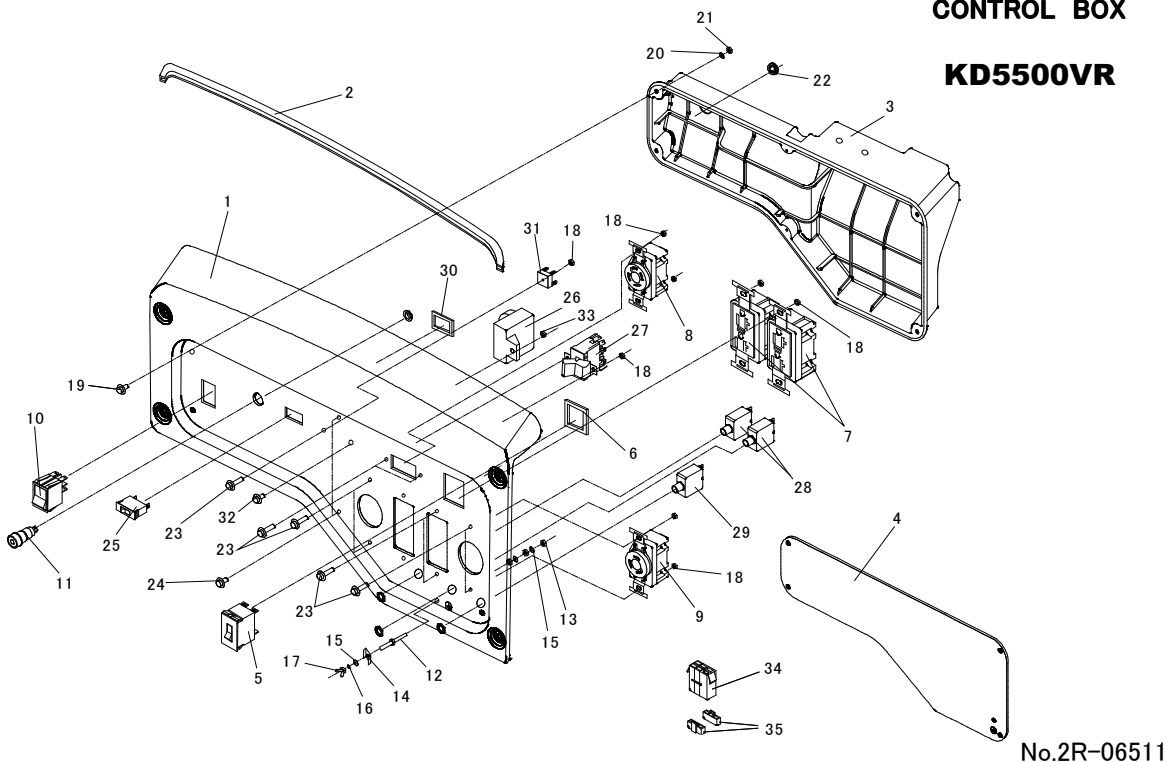


No.2R-06511

| REF No. | Parts No.     | Parts name                        | Q'ty | Remarks |
|---------|---------------|-----------------------------------|------|---------|
| 1       | KD15302248000 | CONTROL PANEL                     | 1    |         |
| 2       | KD15350596000 | RUBBER, CONTROL                   | 1    |         |
| 3       | KD15350680010 | CONTROL BOX                       | 1    |         |
| 4       | KD15452146000 | PANEL,LABEL                       | 1    |         |
| 5       | KD15400111000 | CURCUIT BREAKER 20A               | 1    |         |
| 6       | KD15301081001 | SPACER                            | 1    |         |
| 7       | KD15400104000 | RECEPTACLE 20A, 125V , GFCI       | 2    |         |
| 8       | KD15400106000 | RECEPTACLE 30A, 125/250V          | 1    |         |
| 9       | KD15400105000 | RECEPTACLE 30A, 125V              | 1    |         |
| 10      | KD15400253000 | ENGINE SWITCH                     | 1    |         |
| 11      | KD85111573300 | NEON BRACKET , 125V               | 1    |         |
| 12      | KD15550168001 | STUD BOLT                         | 1    |         |
| 13      | KD15550329000 | HEX,NUT W/FLANGE (M5)             | 3    |         |
| 14      | KD15301979000 | CAP WASHER (M5)                   | 1    |         |
| 15      | KD15550333000 | FLAT WASHER (M5)                  | 3    |         |
| 16      | KD15550334000 | LOCK WASHER (M5)                  | 1    |         |
| 17      | KD15550335000 | WING NUT (M5)                     | 1    |         |
| 18      | KD15550269000 | HEX,NUT W/FLANGE M4               | 11   |         |
| 19      | KD15550185000 | CROSS RECESSED HEAD SCREW (M5-15) | 4    |         |
| 20      | KD15550216000 | LOCK WASHER (M5)                  | 4    |         |
| 21      | KD15550215000 | HEX,NUT W/FLANGE (M5)             | 4    |         |
| 22      | KD15350598000 | GROMMET                           | 1    |         |
| 23      | KD19SF4904014 | CROSS RECESSED HEAD SCREW (M4-14) | 11   |         |
| 24      | KD19S21904012 | SCREW, SELF TAP M4-12             | 2    |         |
| 25      | KD15400108000 | SWITCH,AUTO THROTTLE              | 1    |         |
| 26      | KD19600700660 | CONTROL UNIT,AUTO THROTTLE        | 1    |         |
| 27      | KD15400143000 | SWITCH,VOLTAGE SELECTOR           | 1    |         |
| 28      | KD15400171000 | CURCUIT BREAKER 20A               | 2    |         |

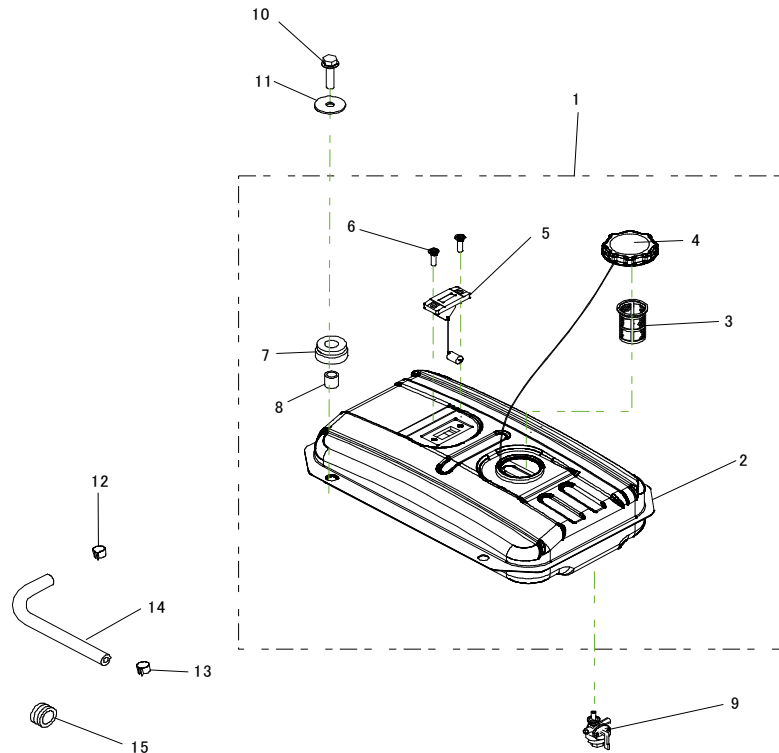
**CONTROL BOX**

**KD5500VR**



| REF No. | Parts No.     | Parts name                        | Q'ty | Remarks |
|---------|---------------|-----------------------------------|------|---------|
| 29      | KD15400173000 | CURCUIT BREAKER 30A               | 1    |         |
| 30      | KD15301082001 | SWITCH SPACER                     | 1    |         |
| 31      | KD15400240000 | BRIDGE DIODE                      | 1    |         |
| 32      | KD19SF4906015 | CROSS RECESSED HEAD SCREW (M6-15) | 1    |         |
| 33      | KD19N10906000 | HEX,NUT W/FLANGE M6               | 1    |         |
| 34      | KD15400157000 | CONNECTOR 6P                      | 2    |         |
| 35      | KD15400162000 | RETAINER                          | 4    |         |

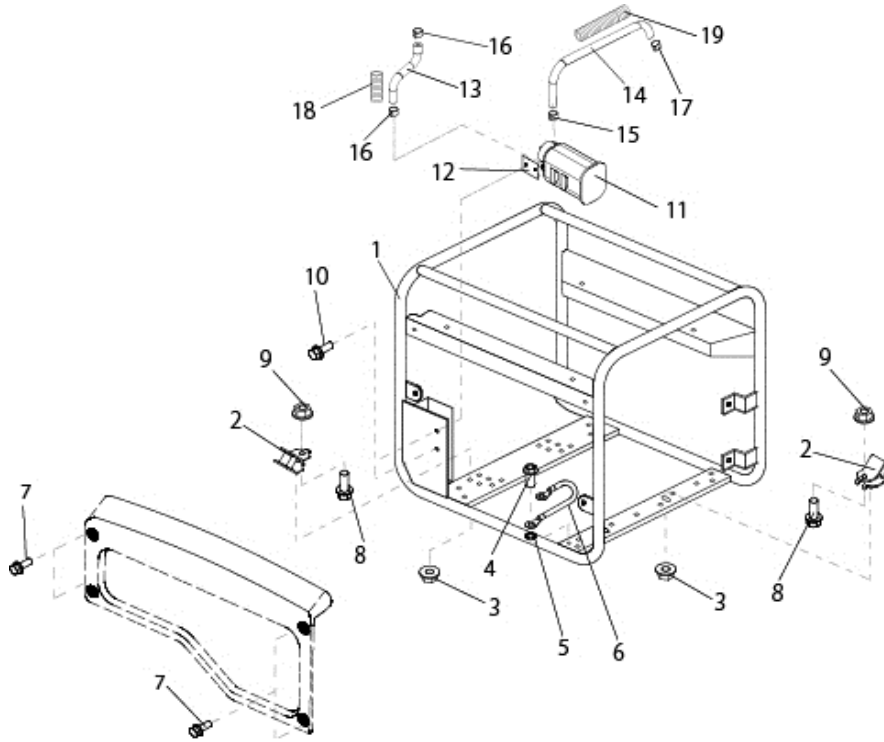
**FUEL TANK**  
**KD5500VR**



No.2R-06511

| REF No. | Parts No.      | Parts name                        | Q'ty |              | Remarks    |
|---------|----------------|-----------------------------------|------|--------------|------------|
| 1       | KD15601682010  | FUEL TANK (RED) COMP.             | 1    |              |            |
| 2       | KD15301982010  | FUEL TANK (RED)                   | 1    |              |            |
| 3       | KD15350580001  | FILTER COMP., FUEL                | 1    |              |            |
| 4       | KD15302001000  | CAP COMP., FUEL FILLER WITH CHAIN | 1    |              |            |
| 5       | KD15301674001  | GAUGE ASSY., FUEL                 | 1    |              |            |
| 6       | KD15550293001  | SCREW (M5-12)                     | 2    |              |            |
| 7       | KD15321880100  | RUBBER,TANK CUSHION               | 4    |              |            |
| 8       | KD15321670270  | COLLAR,TANK CUSHION               | 4    |              |            |
| 9       | KD15150135001  | FUEL VALVE                        | 1    |              |            |
| 10      | KD19B30906025  | HEX,BOLT W/FLANGE (M6x1.0-25)     | 4    |              |            |
| 11      | KD19W00906025  | WASHER,TANK CUSHION (M6x25,1.6t)  | 4    |              |            |
| 12      | 95002-40800-08 | CRIP B8, TUBE                     | 1    | <del>1</del> | HONDA PART |
| 13      | KD15301192000  | CRIP,TUBE                         | 1    | <del>1</del> |            |
| 14      | KD15350695000  | TUBE,FUEL (200mm)                 | 1    | <del>1</del> |            |
| 15      | 90854-ZB3-0002 | RUBBER,FUEL TUBE                  | 1    | <del>1</del> | HONDA PART |

**FRAME**  
**KD5500VR**



No.2R-06511

| REF No. | Parts No.     | Parts name                   | Q'ty | Remarks |
|---------|---------------|------------------------------|------|---------|
| 1       | KD15302009000 | FRAME                        | 1    |         |
| 2       | KD200900520   | ANTI-VIBRATION RUBBER        | 4    |         |
| 3       | KD203200010   | HEX,NUT W/FLANGE(M8X1.25)    | 4    |         |
| 4       | KD19B30906012 | HEX, BOLT W/FLANGE (M6×12)   | 1    |         |
| 5       | KD19W50906000 | TOOTH LOCK WASHER(M6)        | 1    |         |
| 6       | KD15500377000 | BONDING WIRE                 | 1    |         |
| 7       | KD19SS6906016 | BOLT, M6-16                  | 4    |         |
| 8       | KD203000720   | HEX, BOLT W/FLANGE (M10×45)  | 4    |         |
| 9       | KD203200020   | HEX,NUT W/FLANGE(M10X1.25)   | 4    |         |
| 10      | KD19SS6906012 | BOLT, M6-12                  | 2    |         |
| 11      | KD15950138000 | CARBON CANISTER (C-U-07-022) | 1    |         |
| 12      | KD15950141000 | STAY , CARBON CANISTER       | 1    |         |
| 13      | KD15350676000 | TUBE , SURGE                 | 1    |         |
| 14      | KD15350678000 | TUBE , PURGE                 | 1    |         |
| 15      | KD15302061000 | CRIP , φ11.6                 | 1    |         |
| 16      | KD15302060000 | CRIP , φ10.0                 | 2    |         |
| 17      | KD15302063000 | CRIP , φ14.8                 | 1    |         |
| 18      | KD15350703000 | TUBE , CORRUGATE (320mm)     | 1    |         |
| 19      | 15350702000   | TUBE , CORRUGATE (800mm)     | 1    |         |