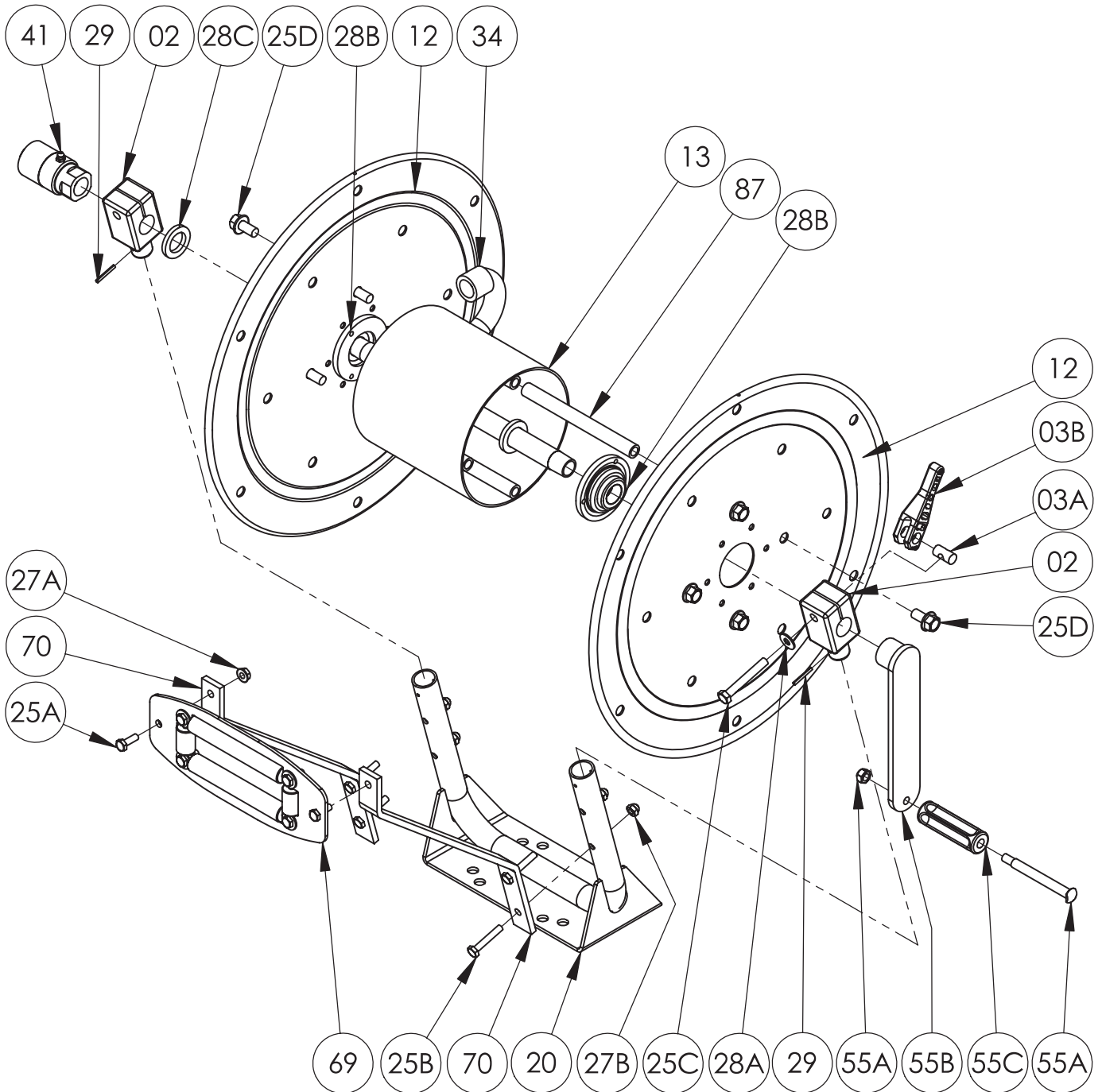




Hannay Reels, Inc., 553 State Route 143
 Westerlo, NY 12193
 Telephone 518-797-3791 • Toll Free 1-877-GO-REELS (467-3357)
 FAX 1-800-REELING (733-5464)
 INT'L FAX (518) 797-3259
 Website: www.hannay.com
 E-mail: reels@hannay.com

ISO 193
PARTS LIST
PRESSURE WASH REEL
Model PW-2



PARTS LIST
ISO 193
PRESSURE WASH REEL (Model PW-2)

When ordering parts
BE SURE TO SPECIFY COMPLETE MODEL NUMBER and SERIAL NUMBER OF REEL.
USE PART NUMBER!

<u>Item No.</u>	<u>Description</u>	<u>PART NUMBER</u>	<u>Quantity</u>
02	1/2" Split Bearing for PW-2, per P02A-00130	9902.1250	2
03A	Brass Barrel Nut for Cam Lock Brake	9947.0133	1
03B	Cam Lock Lever	9947.0132	1
12	(17-18) 16.5" Diameter Disc 14 GA Steel (E-Coated) ~Specify PW-2.....	9903.0516	2
13	Drum, 6" Diameter Aluminum ~Specify PW-2.....	9905.7112	1
20	PW-2 Frame Assembly, per P19A-00070	9908.1025	2
25A	1/4"-20 x 3/4" Hex Head Cap Screw	9904.1001	2
25B	1/4"-20 x 1-1/2" Hex Head Cap Screw	9904.1004	4
25C	5/16"-18 x 2-1/4" Hex Head Bolt	9904.1107	1
25D	3/8"-16 x 3/4" Spinlock Bolt	9904.2201	8
27A	1/4"-20 Spinlock Nut.....	9904.6000	2
27B	1/4"-20 Acorn Nut	9958.0037	4
28A	1/4" USS Flat Washer	9954.0005	1
28B	1/2" Hub Disc Washer, per P28A-00050.....	9965.0040	2
28C	1-3/8" O.D. x 7/8" I.D. x 3/16" Hub Spacer Washer	9954.0020	1
29	1/8" Diameter x 1" Long Roll Pin for Attaching Bearings	9958.0085	2
34	1/2" Welded Steel Hub ~Specify PW-2	9901.0610	1
41	1/2" 90 Degree FxF Super Swivel (Aflas Packing).....	9927.8551	1
55A	3/8" Shoulder Bolt and Nut for plastic crank handle.....	9914.0511	1
55B	Hand Crank (Includes 55A and 55C)	9914.0021	1
55C	Black Plastic Crank Handle	9914.0506	1
69	PW-2R Roller Assembly Complete, per A69A-00190	9939.0081	1
70	Roller Mounting Bracket for PW-2, per P70A-00770	9941.0211	2
87	Anodized Aluminum Threaded Spacer Tube, 6" Long.....	9904.0312	4