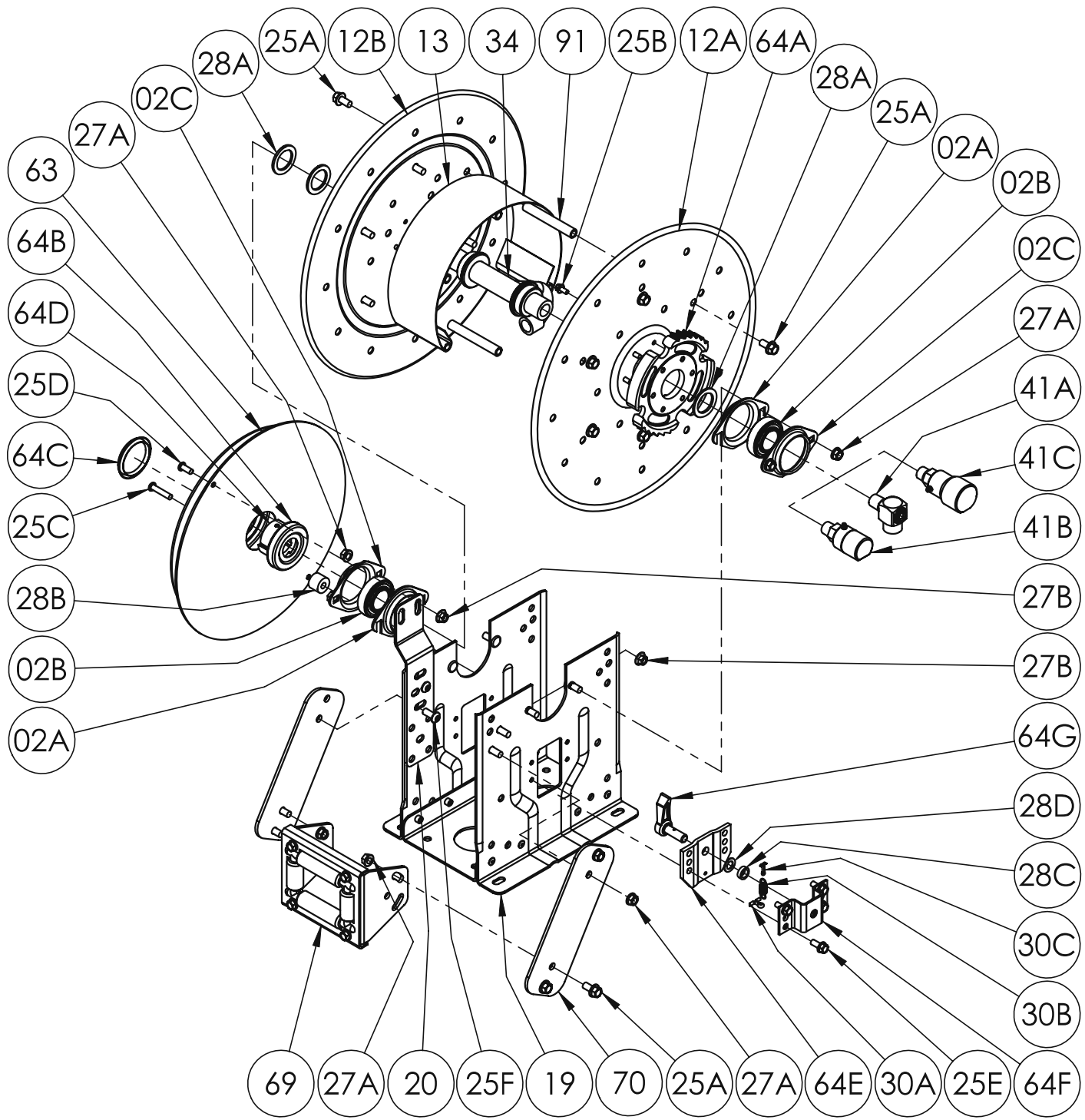




Hannay Reels, Inc., 553 State Route 143
 Westerlo, NY 12193
 Telephone 518-797-3791 • Toll Free 1-877-GO-REELS (467-3357)
 FAX 1-800-REELING (733-5464)
 INT'L FAX (518) 797-3259
 Website: www.hannay.com
 E-mail: reels@hannay.com

ISO 79
PARTS LIST
N-700 SERIES
Spring Retractable Reels
For Single Hose



**PARTS LIST
ISO 79
N-700 SERIES**

When ordering parts

BE SURE TO SPECIFY COMPLETE MODEL NUMBER and SERIAL NUMBER OF REEL.

USE PART NUMBER!

Item No.	Description	PART NUMBER	Quantity
02A	Self Aligning Bearing Holder (Slotted), per P02A-00090 (Steel E-Coated)	9902.2801	2
02B	1" Self Aligning Bearing Insert (Plated)	9902.1500	2
02C	Self Aligning Bearing Holder, per P02A-00080 (Steel E-Coated)	9902.2800	2
02D	1" Self Aligning Bearing for N Series Complete (Items 02A, 02B and 02C)	9902.2600	2
12A	Front Disc	Spec Model	1
12B	Back Disc (Includes Disc Washer for 23-24 and larger Discs)	Spec Model	1
13	10-1/2" Diameter 304 SST Wrap Around Drum (Specify Model)	9905.0138	1
13	15-1/2" Diameter 304 SST Wrap Around Drum (Not Shown) (Specify Model)	9905.0178	1
13	8" Diameter 304 SST Wrap Around Drum (Not Shown) (Specify Model)	9905.0128	1
19	N Series Spring Reel Frame Assembly	Spec Model	1
20	N Series Spring Mounting Bracket, per P20A-00280 (for "B", "G" & "J" Springs)	9922.0050	1
25A	3/8"-16 x 3/4" Spinlock Bolt	9904.2201	9, 16 or 24
25B	1/4"-20 x 1/2" Spinlock Bolt (Ratchet Wheel)	9904.1058	6
25C	5/16"-18 x 1-1/2" Hex Socket Button Head Screw (For "J" & "C" Springs)	9904.9104	1 or 2
25D	5/16"-18 x 3/4" Hex Socket Button Head Screw (For "J" Spring)	9904.9101	1
25E	5/16"-18 x 3/4" Thread Cutting Hex Head Bolt (For Ratchet Locking Ass'y)	9958.0055	4
25F	3/8"-16 x 7/8" Socket Head Cap Screw	9904.9201	4
25G	3/8"-16 x 1-1/2" Spinlock Bolt (For "B" & "G" Springs) (Not Shown)	9904.2204	2
25H	3/8"-16 x 3/4" Spinlock Bolt (For "B" & "G" Springs) (Not Shown)	9904.2201	2
25I	1/4"-20 x 3/4" Spinlock Bolt (Ratchet Wheel) (8" Drum Reels Only) (Not Shown)	9904.1060	6
25J	3/8"-16 x 3/4" Hex Head Cap Screw (8" Drum Reels Only) (Not Shown)	9904.1201	5
27A	3/8"-16 Spinlock Nut	9904.6200	12 or 16
27B	5/16"-18 Large Flange Spinlock Nut (For "J" & "C" Springs)	9904.6100	2
28A	1-7/8" O.D. x 1-5/16" I.D. x 1/8" Thick Hub Spacer, per P28A-00360 (Plastic)	9954.0021	3 or 5
28B	Spring Spacer, per P28A-00070 (For "C" and "J" Springs)	9922.0033	1
28C	Plastic Ratchet Pawl Spacer, per P28A-00300	9922.0022	1
28D	Stainless Steel Ratchet Pawl Washer, per P28A-00820	9922.0061	1
28E	Oval Spring Spacer, per P28A-00020 (For "B" & "G" Springs) (Not Shown)	9922.0032	1
28F	1/2" Thick Spring Spacer, per P28A-00330 (For "C" Spring) (Not Shown)	9954.0015	1
28G	3/8" Flat Washer (For "C" Spring) (Not Shown)	9954.0007	1
29	Woodruff Key #9 for Spring Arbor (3/16" x 3/4") (Not Shown)	9916.0080	1
30A	3/16" x 3/4" Stainless Steel Cotter Pin for N Series Ratchet	9922.0028	1
30B	Ratchet Pawl Spring	9922.0008	1
30C	1/8" x 1" Stainless Steel Cotter Pin for Ratchet Pawl	9922.0024	1
34	1/2" Welded Barstock Hub Assembly (Specify Model and Fittings)	9901.0631	1
34	1/2" SST Welded Barstock Hub Assembly (Specify Model and Fittings)	9901.0634	1
41A	1/2" 90 Degree MxF Balanced Pressure Swivel Joint 3000 PSI, BUNA	9927.8138	1
41B	1/2" 90 Degree MxF Full Flow Swivel Joint 5000 PSI, AFLAS	9927.8151	1
41B	1/2" 90 Degree Oxygen SST MxF Full Flow Swivel Joint 3000 PSI, VITON	9927.8577	1
41C	1/2" 90 Degree MxF Oxygen Full Flow Swivel Joint 6000 PSI, VITON	9927.8177	1
63	"J" Spring w/ Arbor (Item 64D)	9921.0030	1
63	"B" Spring w/ Arbor (Item 64D) (Not Shown)	9921.0015	1
63	"G" Spring w/ Arbor (Item 64D) (Not Shown)	9921.0021	1
63	"C" Spring w/ Arbor (Item 64D) (Not Shown)	9921.0018	1
64A	Ratchet Wheel and Hardware (Item 25B), per P64A-00120	9922.0015	1
64B	Dust Cap for Inner Spring Side	9922.0036	1
64C	Dust Cap for Outer Spring Side	9922.0037	1
64D	Spring Arbor, per P64A-00110 (For "B", "G", "J" or "C" Springs)	9922.0002	1
64E	Ratchet Pawl Housing (Inner) per P64A-00070	9922.0027	1
64F	Ratchet Pawl Housin (Outer) per P64A-00080	9922.0026	1
64G	Right Hand Ratchet Pawl & Pin (Item 30C)	9922.0302	1
64G	Left Hand Ratchet Pawl & Pin (Item 30C) (For Reverse Springs ONLY)	9922.0301	1
64H	Right Hand Ratchet Locking Assembly Complete	9922.0312	1
64H	Left Hand Ratchet Locking Assembly Complete (For Reverse Springs ONLY)	9922.0311	1
69	N204 Complete Roller Assembly for Model N716	9939.0111	1
69	N203 Complete Roller Assembly for Model N715 (Not Shown)	9939.0110	1
69	N206 Complete Roller Assembly for Model N718 (Not Shown)	9939.0113	1
70	N Series Single Roller Arm (Specify Model)	9941.0030	2
91	4" Long Anodized Threaded Spacer Pipe for Model N716	9904.0308	5, 6 or 10
91	3" Long Anodized Threaded Spacer Pipe for Model N715 (Not Shown)	9904.0306	5, 6 or 10
91	6" Long Anodized Threaded Spacer Pipe for Model N718 (Not Shown)	9904.0312	5, 6 or 10