

# **OPERATING INSTRUCTIONS MANUAL**

(Please retain for future reference)

For

## **F-1000T DUAL FUEL CONSTRUCTION HEATER**



**CERTIFIED FOR USE IN CANADA AND U.S.A.**

As per Standard ANSI Z83.7 2000/

CSA 2.14 2000 Gas Fired Construction Heaters Unvented/Unattended Type.



**FLAGRO INDUSTRIES LIMITED  
ST. CATHARINES, ONTARIO  
CANADA**

**GENERAL HAZARD WARNING:**

**FAILURE TO COMPLY WITH THE PRECAUTIONS AND INSTRUCTIONS PROVIDED WITH THIS HEATER, CAN RESULT IN DEATH, SERIOUS BODILY INJURY AND PROPERTY LOSS OR DAMAGE FROM HAZARDS OF FIRE, EXPLOSION, BURN, ASPHYXIATION, CARBON MONOXIDE POISONING, AND/OR ELECTRICAL SHOCK.**

**ONLY PERSONS WHO CAN UNDERSTAND AND FOLLOW THE INSTRUCTIONS SHOULD USE OR SERVICE THIS HEATER.**

**IF YOU NEED ASSISTANCE OR HEATER INFORMATION SUCH AS AN INSTRUCTIONS MANUAL, LABELS, ETC. CONTACT THE MANUFACTURER.**

**WARNING:**

**FIRE, BURN, INHALATION, AND EXPLOSION HAZARD. KEEP SOLID COMBUSTIBLES, SUCH AS BUILDING MATERIALS, PAPER OR CARDBOARD, A SAFE DISTANCE AWAY FROM THE HEATER AS RECOMMENDED BY THE INSTRUCTIONS. NEVER USE THE HEATER IN SPACES WHICH DO OR MAY CONTAIN VOLATILE OR AIRBORNE COMBUSTIBLES, OR PRODUCTS SUCH AS GASOLINE, SOLVENTS, PAINT THINNER, DUST PARTICLES OR UNKNOWN CHEMICALS.**

**WARNING:**

**NOT FOR HOME OR RECREATIONAL VEHICLE USE.**

**WARNING:**

**INTENDED USE IS PRIMARILY THE TEMPORARY HEATING OF BUILDINGS UNDER CONSTRUCTION, ALTERATION, REPAIR OR EMERGENCIES ONLY.**

**ALWAYS PROVIDE ADEQUATE VENTILATION. 1 SQ. IN. OF FRESH AIR MUST BE SUPPLIED FOR EVERY 1000 BTUH OF HEAT.**

**THIS HEATER SHALL BE INSTALLED SUCH THAT IT IS NOT DIRECTLY EXPOSED TO WATER SPRAY, RAIN AND/OR DRIPPING WATER.**

**This heater is designed and approved for use as a construction heater under ANSI Z83.7 2000 and CSA 2.14 2000 Gas Fired Construction Heaters**

**We cannot anticipate every use which may be made of our heaters. CHECK WITH YOU LOCAL FIRE SAFETY AUTHORITY IF YOU HAVE QUESTIONS ABOUT APPLICATIONS.**

**Other standards govern the use of fuel gases and heat producing products in specific applications. Your local authority can advise you about these.**

### **SPECIFICATIONS**

Model Number	-	F-1000T
Input	-	1,000,000 btuh
Fuel	-	Natural Gas or Propane
Inlet Pressure	-	Natural Gas: 7.0" W.C. - Propane: 11" W.C.
Ignition	-	Direct Spark Ignition - Thermostat Control
Air Circulation	-	7000 cfm
Fuel Consumption	-	46 lbs/hr - 952 cfh
Approved	-	cULus listed

### **INSTALLATION:**

The installation of this heater for use with natural gas shall conform with local codes or, in the absence of codes, with the National Fuel Gas Code ANSI Z223.1/NFPA 54 and the Natural Gas and Propane Installation Code, CSA B149.1.

The installation of this heater for use with propane tank or cylinder shall conform with Local codes or, in the absence of local codes, with the Standard for the Storage and Handling of Liquefied Petroleum Gases, ANSI/NFPA 58 and the Natural Gas and Propane Installation Code, CSA B149.

This heater must be located at least 10ft (3m) from any propane gas cylinder. This heater shall not be directed toward any propane gas container within 20ft (6m).

#### **CLEARANCE TO COMBUSTIBLES:**

F-1500T                      TOP: 4 ft              FRONT: 16 ft              SIDES: 2 ft              REAR: 2 ft

#### **CONNECTING THE CYLINDER:**

If cylinders are used to supply the heater, no cylinders smaller than 100lb capacity shall be used. These cylinders must supply a vapor withdrawal only.

1. All cylinder connections must be made using a wrench to tighten the POL fitting.
2. Be sure that the cylinder valve is in the closed position when connection or disconnecting the cylinder.
3. A soap and water solution must be applied to all connections in order to leak check the system.

The gas must be turned off at the propane supply cylinder(s) when the heater is not in use. When the heater is to be stored indoors, the connection between the propane supply cylinder(s) and the heater must be disconnected and the cylinders removed from the heater and stored in accordance with Standard for the Storage and Handling of Liquefied Petroleum Gases, ANSI/NFPA 58 and CSA B149.1, Natural Gas and Propane Installation Code.

**PIPING:** This heater must be installed by a qualified gas technician following local codes published by the authority having jurisdiction. Sizing of supply piping must be determined using the length of pipe run as well as total btuh rating of the appliance(s). Appropriate piping tables must be used to determine size of supply piping dependant on the length of run from source.

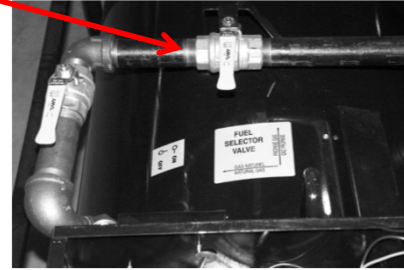
**PRESSURES:**              MAXIMUM INLET PRESSURES:              LP: 14.0 IN. WC.



1. Every construction heater should be inspected before each use, and at least annually by a qualified service person.
2. The hose assembly shall be visually inspected prior to each use of the heater. If it is evident there is excessive abrasion or wear, or the hose is cut, it must be replaced prior to the heater being put into operation. The replacement hose assembly shall be that specified by the manufacturer.
3. The appliance must be kept clear and free from combustible materials, gasoline and other flammable vapors and liquids.
4. The flow of combustion and ventilation air must not be obstructed. Be sure to check the fan assembly and ensure that the motor and blade are operating properly.
5. Compressed air should be used to keep components free of dust and dirt build up. Note: Do not use the compressed air inside any piping or regulator components.

## F-1000T START UP INSTRUCTIONS:

1. Set fuel selector valve according to gas supply to be used

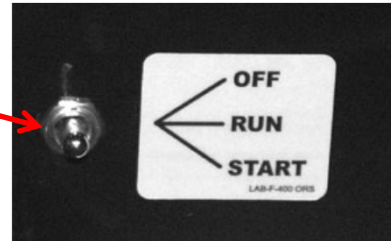


2. Connect construction heater to gas supply with approved hose assembly.

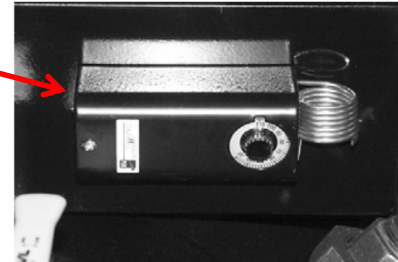
3. Plug the electrical cord into a 20 amp supply.

4. Open all gas supply valves.

5. Depress the main switch to the "START" position. The fan will start and the burner should ignite.



6. Set the Thermostat to the desired temperature.



7. If heater fails to ignite after 3 attempts call your supplier for service.

## TO SHUT DOWN:

1. Close the main gas supply valve while the heater is operating.

2. Move the main switch to the "OFF" position.



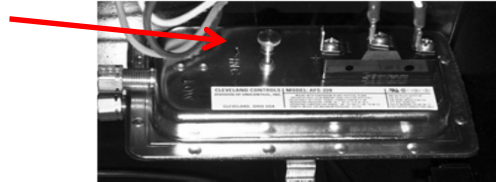
3. Disconnect the heater from gas supply.

## F-1000T TROUBLESHOOTING ANALYSIS:

### PROBLEM: HEATER WILL NOT LIGHT

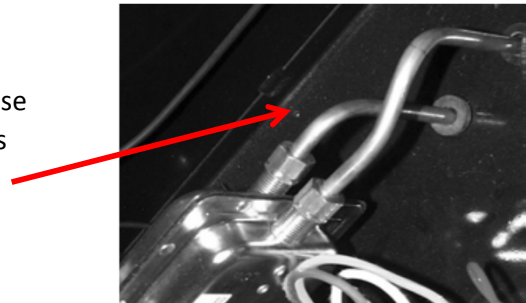
**POSSIBLE CAUSE:** Air switch improperly set.

**REMEDY:** Use centre adjusting screw to set air switch.  
Turn clockwise to increase sensitivity, turn counter clockwise to decrease sensitivity.



**POSSIBLE CAUSE:** Blockage in copper inlet tubes.

**REMEDY:** Disconnect tubes from air switch. Use high pressure air to clean any debris that may block the airflow.

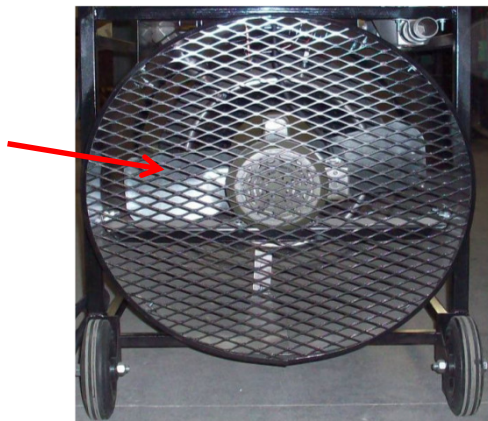


**POSSIBLE CAUSE:** Faulty Switch.

**REMEDY:** Replace Switch.

**POSSIBLE CAUSE:** Rear of heater blocked.

**REMEDY:** Ensure rear of heater is unobstructed and proper rear clearances are maintained. (see approval label)

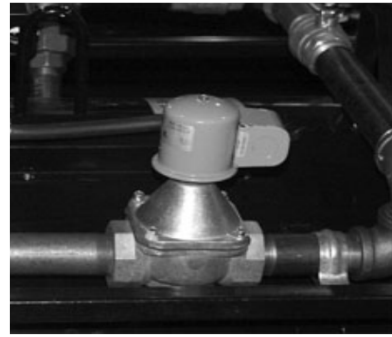




**POSSIBLE CAUSE:** Faulty Solenoid.

**REMEDY:** Ensure solenoid is energized.  
(use volt meter)

Ensure plunger in the solenoid is being activated. (use manometer at test point after solenoid)  
(use volt meter)

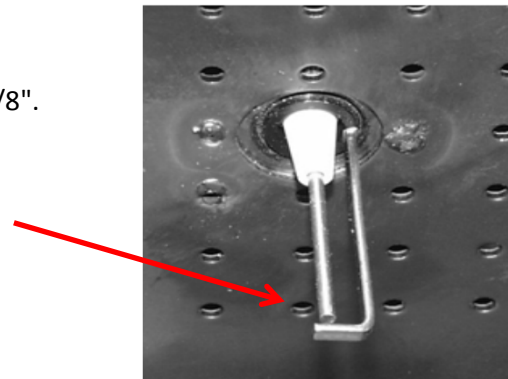


**POSSIBLE CAUSE:** Incorrect Gas Supply.

**REMEDY:** Ensure required gas supply pressures are supplied to the heater.  
(see approval label)

**POSSIBLE CAUSE:** Spark Plug.

**REMEDY:** Ensure gap in spark plug is approx. 1/8".  
Check spark plug wire connections.  
Ensure spark plug has good spark.  
Replace spark plug if necessary.



**POSSIBLE CAUSE:** Ignition Board

**REMEDY:** Ensure electrical signals for both spark plug and solenoid are present.  
(use volt meter)

Ensure ignition board is properly grounded.



**POSSIBLE CAUSE:** Thermostat.

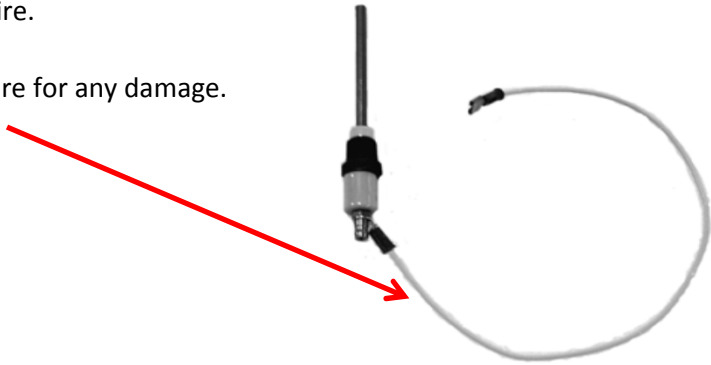
**REMEDY:** Ensure the thermostat is calling for heat.



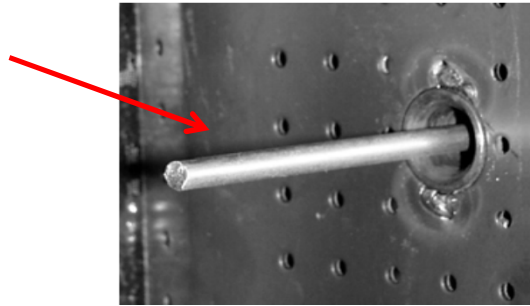
**PROBLEM: HEATER WILL NOT REMAIN LIT AFTER START UP**

**POSSIBLE CAUSE:** Faulty flamerod wire.

**REMEDY:** Check flamerod wire for any damage.



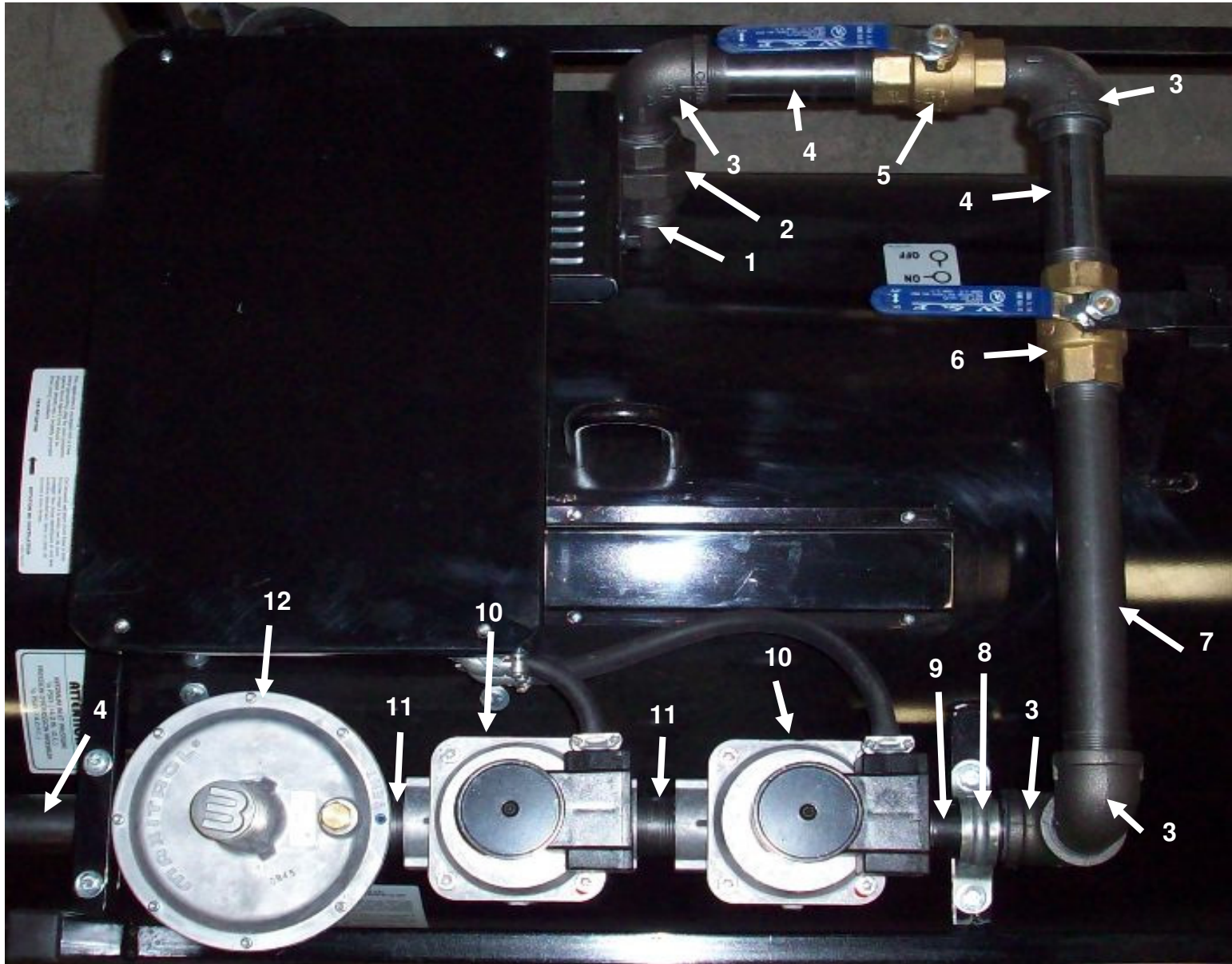
Ensure connections are secure.  
Replace flamerod if necessary.



*F-1000T Parts List*

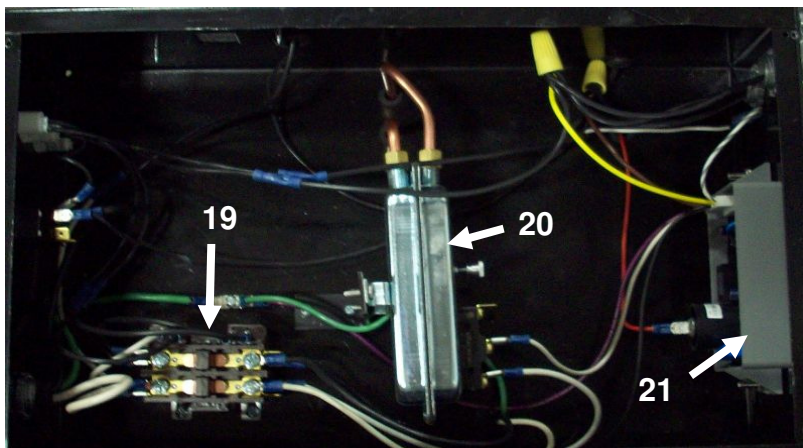
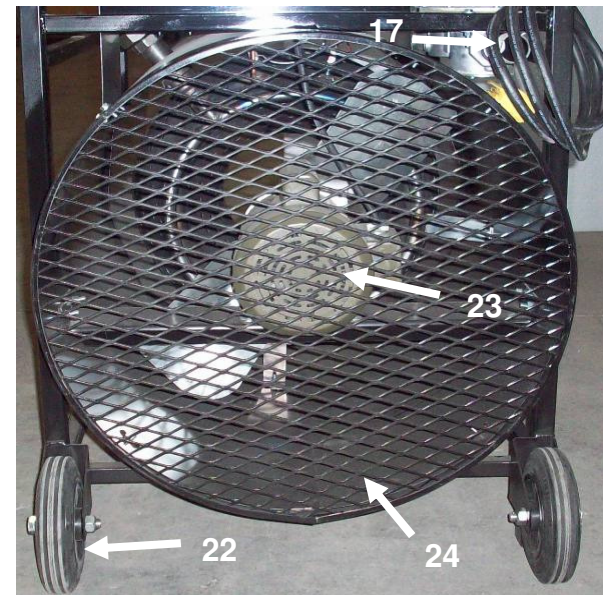
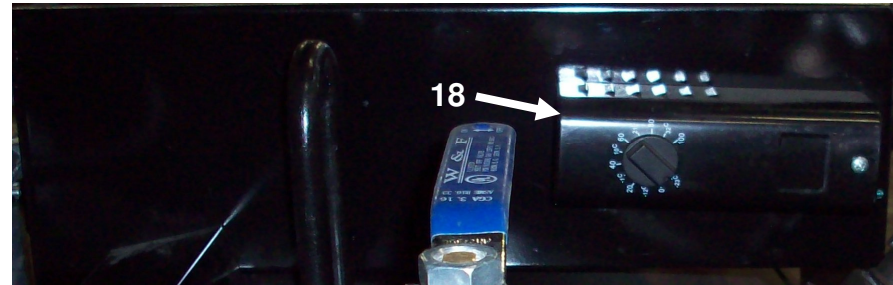
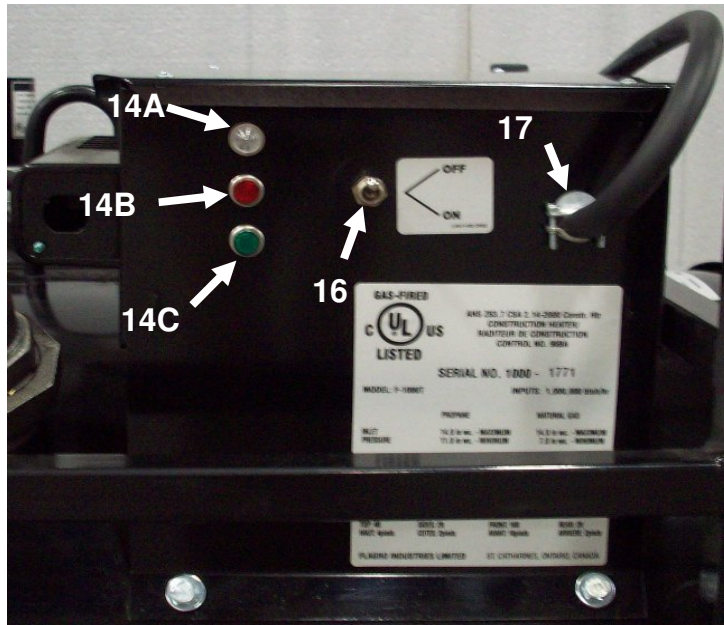


# F-1000T Parts List





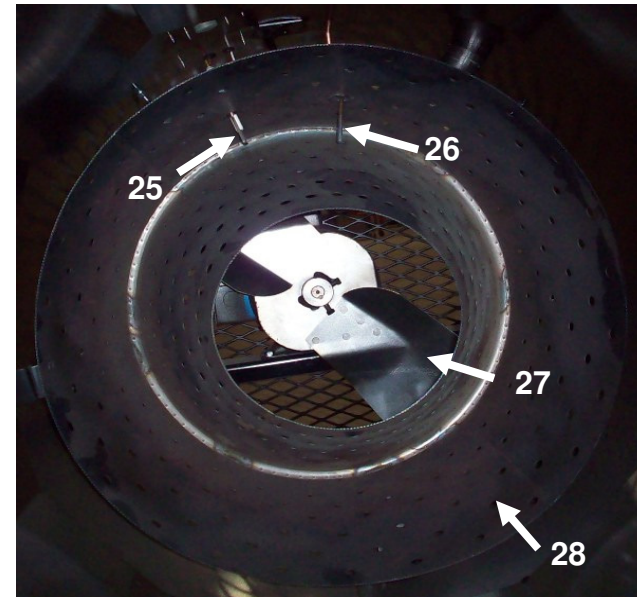
# F-1000T Parts List



## F-1000T Parts List



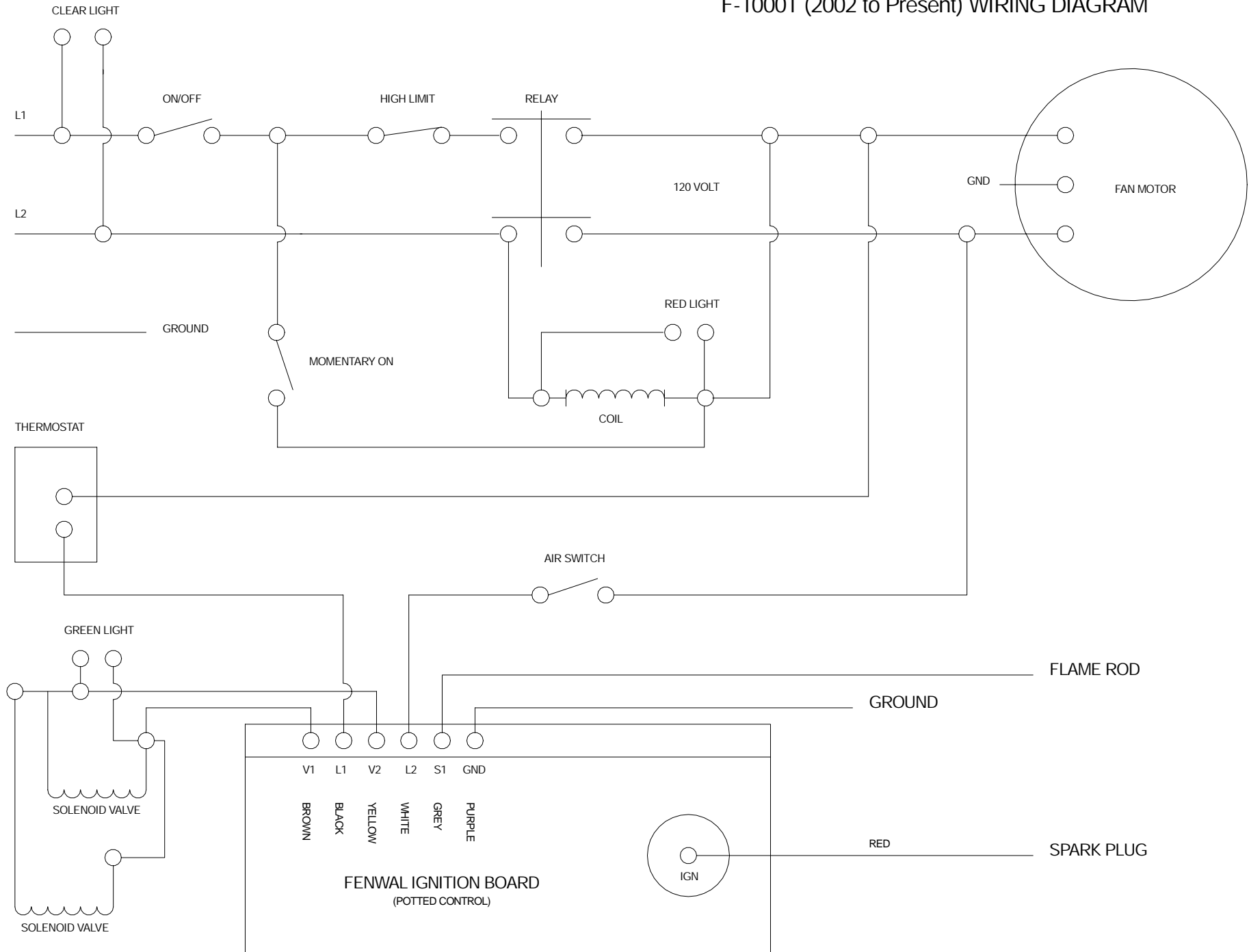
<u>Item #</u>	<u>Description</u>	<u>P/N</u>	<u>Notes</u>
1	1 1/4" x 3 1/2" Nipple	40-113G3.5	
2	1 1/4" BM Union	40-104-20	
3	1 1/4" x 90 BM Street Elbow	40-116-20	
4	1 1/4" x 5 1/2" Nipple	40-113G5.5	
5	1 1/4 Fuel Shut Off Valve	S-1003A	
6	1 1/4 Fuel Selector Valve	S-1003	
7	1 1/4" x 11" Nipple	40-113G11	
8	Pipe Hanger	S-1031	
9	2 1/4" X 4 1/2" Nipple	40-113G4.5	
10	Solenoid	S-1004	
11	1 1/4" x 2" Nipple	40-113G2	
12	Regulator	S-1002	
14A	Clear Light Indicator	S-1020A	
14B	Red Light Indicator	S-1020B	
14C	Green Light Indicator	S-1020C	
16	Off-Run -Start	S-411	
17	Power Cord including plug	S-1021	
18	Thermostat	S-416	
19	Main Relay	S-412	
20	Air proving switch	S-414	
21	Potted Ignitino control	S-415P	
22	Rubber Wheel 8"	S-1022	
23	1 HP Motor	S-1000	
24	S.S. Filter Screen	S-1002FS	
25	Long reach Igniter	S-408A	
26	Flame Rod	S-406	
27	Fan Blade	S-1001	
28	Burner	S-1005	
29	1 1/4" x 15FT Hose Assembly	S54180-20	
30	1 1/4" Second Stage Reg.	B42R1.25	



Hose & Regulator



# F-1000T (2002 to Present) WIRING DIAGRAM



Note: If any of the original wire as supplied with the appliance must be replaced it must be replaced with type 14g TEW wire or its equivalent.

FLAGRO INDUSTRIES LIMITED	
<b>TITLE:</b> F-1000T (2002) - WIRING DIAGRAM	<b>DWG. NO.</b> 1000T-202

# PARTS LIST FOR F-1000T

Part Number	Part Description	
S-1000	1 HP MOTOR	
S-1001	FAN BLADE	
S-1002	REGULATOR	
S-1002FS	S.S. FILTER SCREEN	
S-1003	FUEL SELECTOR VALVE	
S-1003A	FUEL SHUT OFF VALVE	
S-1004	SOLENOID VALVE	
S-1005	BURNER	
S-406	FLAME ROD	
S-1007	FLAME ROD WIRE	
S-408A	LONG REACH IGNITER	
S-1009	IGNITION WIRE	
S-410	HIGH TEMPERATURE LIMIT	
S-411	OFF-RUN-START SWITCH	
S-411A	OFF-ON SWITCH (USA)	
S-412	MAIN RELAY	
S-414	AIR PROVING SWITCH	
S-415P	POTTED IGNITION CONTROL 120V (2002 TO PRESENT)	
S-416	THERMOSTAT	
S-1019	SCREEN ASSEMBLY	
S-1020A	CLEAR INDICATOR LIGHT	
S-1020B	RED INDICATOR LIGHT	
S-1020C	GREEN INDICATOR LIGHT	
S-1021	POWER CORD INCLUDING PLUG	
S-1022	RUBBER WHEEL - 8"	