

1-1/2" Self-Priming Chemical Pumps

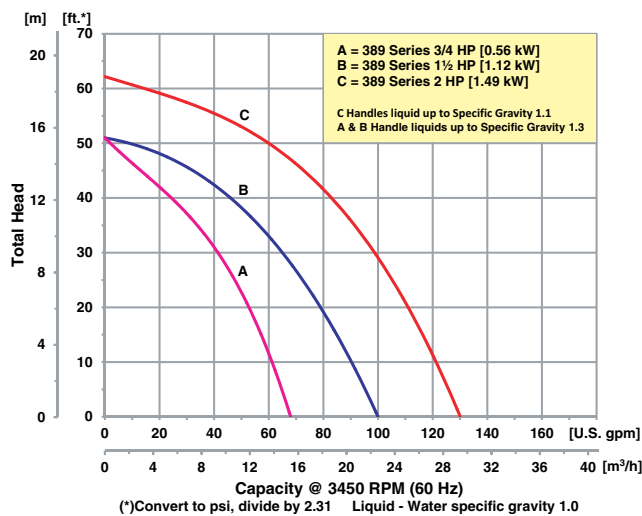
- Available in: Bronze or 300 Series Investment Cast Stainless Steel Construction with Stainless Steel Impeller
- Viton® or Teflon® Mechanical Seal and O-Ring – Depending on Model
- Dual Volute Design
- 1-1/2" NPT Suction and Discharge Ports
- Maximum Temperature
 - ♦ Bronze 200° F
 - ♦ Stainless Steel 250° F
- Maximum Flow 132 GPM
- Maximum Head 63 Ft.
- Self-Priming to 6 Ft.
- Self-Cleaning, Semi-Open Impeller
- 3/4 to 2 HP Totally Enclosed Fan Cooled (TEFC) Motor Single or Three Phase Motor

Model 3890-98
Stainless Steel

Model 3890-97
Bronze

AMT Self-Priming 300 Series Stainless Steel or Bronze Centrifugal pumps are designed for a wide range of applications including chemical processes, waste water treatment and pumping agriculture fertilizers/fumigants. All models are equipped with Totally Enclosed Fan Cooled (TEFC) motors. 300 Series Stainless Steel models are fitted with Teflon® mechanical seal and o-ring, while bronze models come standard with Viton® mechanical seal and o-ring. Pumps are self-priming to 6 feet. Pumps are designed to handle liquids with specific gravities up to 1.3 and viscosities to 100 SSU.

Performance of Self-Priming Centrifugal Pumps



400 Spring Street • Royersford, PA 19468 USA

www.amtpump.com • 888-amt-pump (268-7867)

For use with nonflammable liquids compatible with pump component materials. Viton® and Teflon® are registered trademarks of E. I. DuPont.

Pump Dimensional & Specification Data

Model ‡	Curve	HP	PH	ENC	Voltage @ 60 Hz +	Full Load Amps	SUC*	DIS*	L**	W**	H	‡ Ship Wt. (Lbs.)
3890	A	3/4	1	TEFC	115/230	9/5	1½	1½	15.8 [40.1]	8.8 [22.3]	9.5 [24.1]	45
3892			3		230/460	3/2			15.3 [38.8]	8.8 [22.3]	9.5 [24.1]	41
3891	B	1½	1	TEFC	115/230	18/9	1½	1½	16.5 [41.9]	8.8 [22.3]	9.5 [24.1]	56
3893			3		230/460	5/3			16.3 [41.4]	8.8 [22.3]	9.5 [24.1]	48
3894	C	2	3	TEFC	230/460	6/3	1½	1½	17.3 [43.9]	8.8 [22.3]	9.5 [24.1]	51
3899			-		PED	-			-	13.4 [34.0]	6.5 [16.5]	9.5 [24.1]

(*) Standard NPT (Female) pipe thread.

(**) This dimension may vary due to motor manufacturer's specifications.

(+) 3-Phase models can also operate on 50 Hz (This will change full load amps and service factor, RPM and priming capabilities).

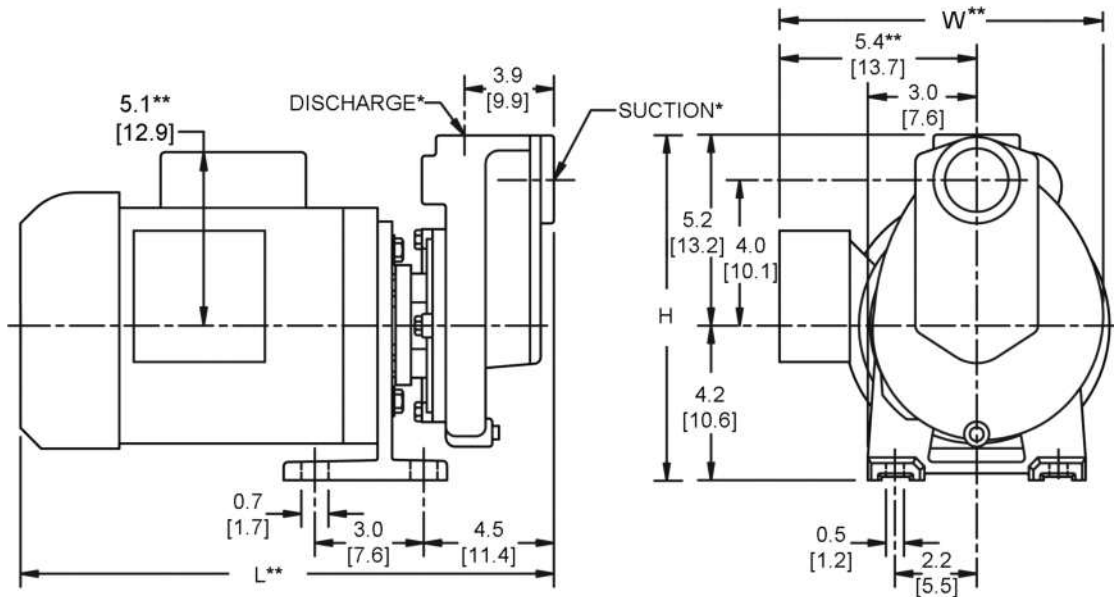
NOTE: Dimensions are in inches (centimeters) and have a tolerance of ± 1/4".

NOTE: Electric supply for ALL motors must be within ±10% of nameplate voltage rating (e.g. 230V ±10%= 207 to 253).

‡ Add Suffix -97 or -98 for Specific Model (Ex. 3890-97)

(-97) Cast Bronze Construction with Stainless Steel Impeller and Viton® Seals

(-98) Cast Stainless Steel Construction with Teflon® Seals



Standard Features

- Bronze or Stainless Steel Construction with Stainless Steel Impeller
- Viton® or Teflon® Mechanical Seal and O-ring - Depending on Model
- 1-1/2" NPT Suction and Discharge Ports
- Maximum Temperature
 - ♦ Bronze 200° F
 - ♦ Stainless Steel 250° F
- Self-priming to 6 Ft.
- Maximum Working Pressure 75 PSI
- Self-cleaning, Semi-open Impeller
- Pedestal Models Feature Epoxy Coated Bearing Housing with 3/4" Diameter Stainless Steel Shaft with 3/16" Keyway and Sealed Ball Bearings
- 3/4 to 2 HP Totally Enclosed Fan Cooled (TEFC) Single or Three Phase Motors
- **Designed to handle liquids of specific gravities up to 1.3**
- QSP - Quick Ship Pump for Many Models

Hazardous Duty/Explosion Proof motors available from stock ranging from 1 to 10 HP; CALL FOR QUOTATION & LEAD TIME!