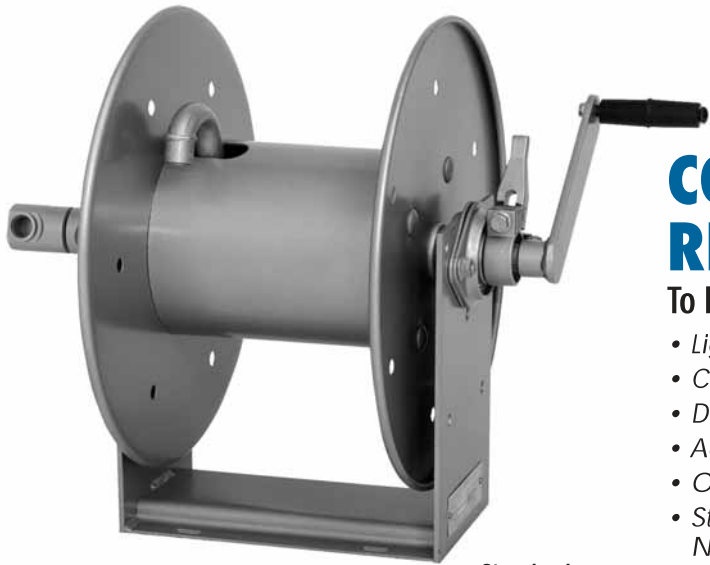


1000

COMPACT MANUAL REWIND REELS

To handle single 1/4" or 3/8" I.D. hose.



Standard Configuration Shown

- Lightweight
- Compact
- Direct crank rewind permanently attached.
- Adjustable cam lock brake standard.
- Optional pin lock available.
- Standard inlet 90° ball bearing swivel joint 1/2" female NPT threads.
- Standard outlet 3/8" female NPT threads.
- Pressures to 3000 psi (207 bar).
- Temperatures from +20° F to +400° F (-7° C to +204° C).
- Consult factory for other pressures & temps.

For:

- Pressure Washing
- Washdown
- Spray Operations
- Air

Parts Drawing – ISO 165

Model Number	Hose Capacity of Reel			Approx. Weight			Reel Dimensions***			
	I.D. (in) I.D. (mm)	feet m.		NET	UPS/ FedEx SHIP Wt.	Freight SHIP Wt.	A	B	F	X
1014-14-16	1/4"	100	75	23	42*	58	8.12	6	19	4
	6	31	23	10	19	26	206	152	483	102
1016-14-16	3/8"	150	100	24	42*	59	10.12	8	21	6
	10	46	31	11	19	27	257	203	533	152
1020-14-16	3/8"	250	175	25	42*	60	14.12	12	25	10
	10	76	53	11	19	27	359	305	635	254

Notes:

1. Specifications subject to change.
2. Other sizes, from standard components, available on request.
3. **Finish:** refer to Page 4.

4. Be sure to check dimensions and weights prior to ordering.

NOTICE: A Flexible Connector must be used between the inlet pipe and the inlet swivel joint.

* Dimensional weight may apply when shipped as a parcel package (via FedEx or UPS Ground).

*** x,y indicate mounting holes. See page 2

