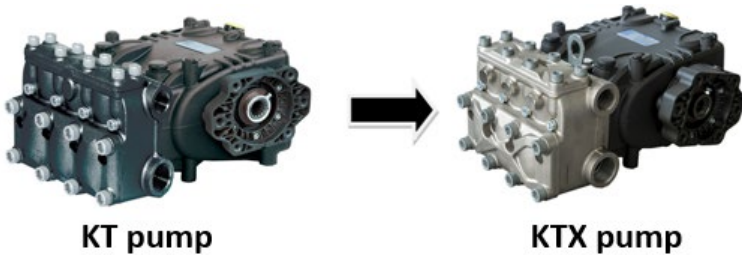


KTX24 / KTX28 Manifold Kit Assembly Instruction



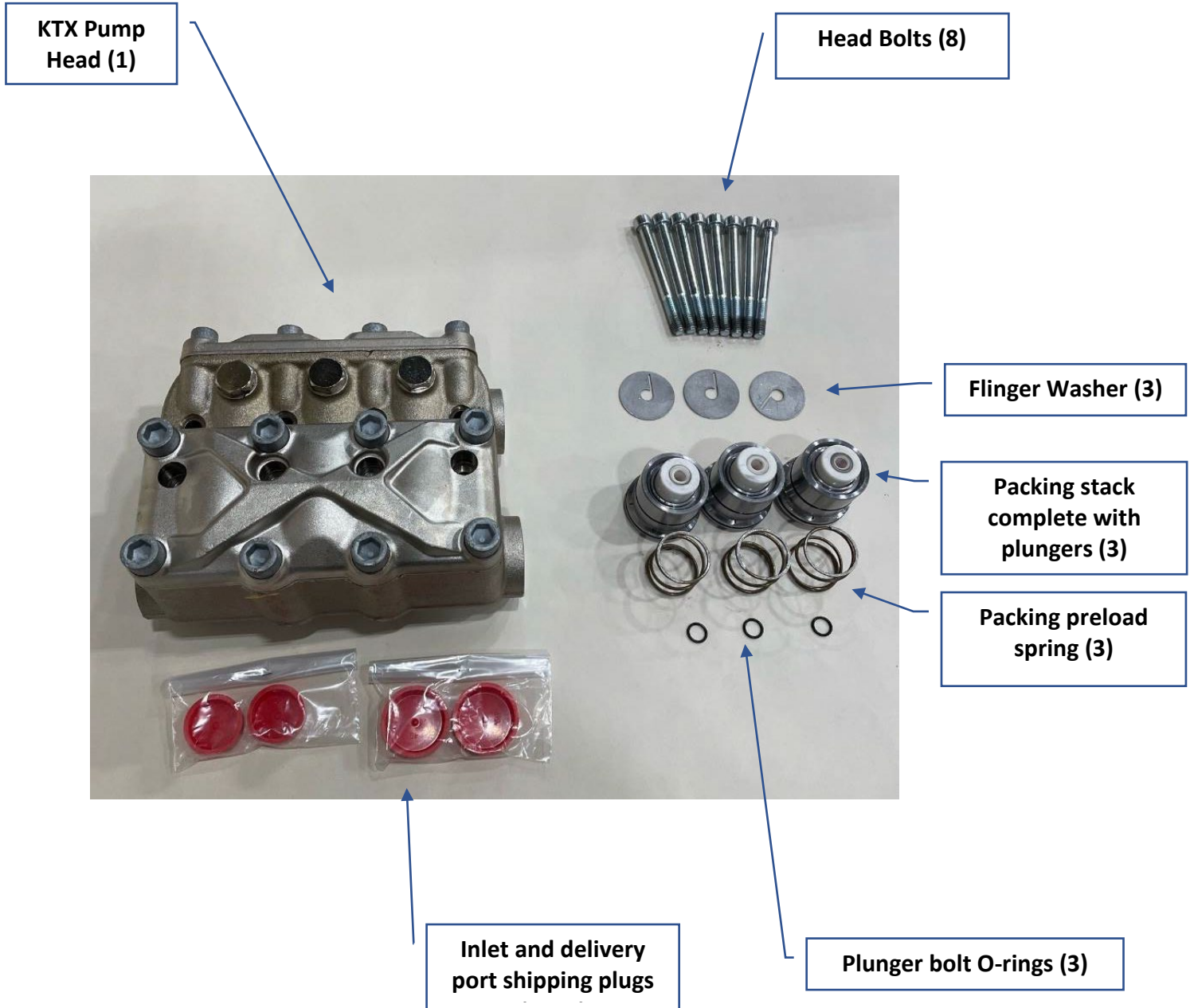
KT pump

KTX pump

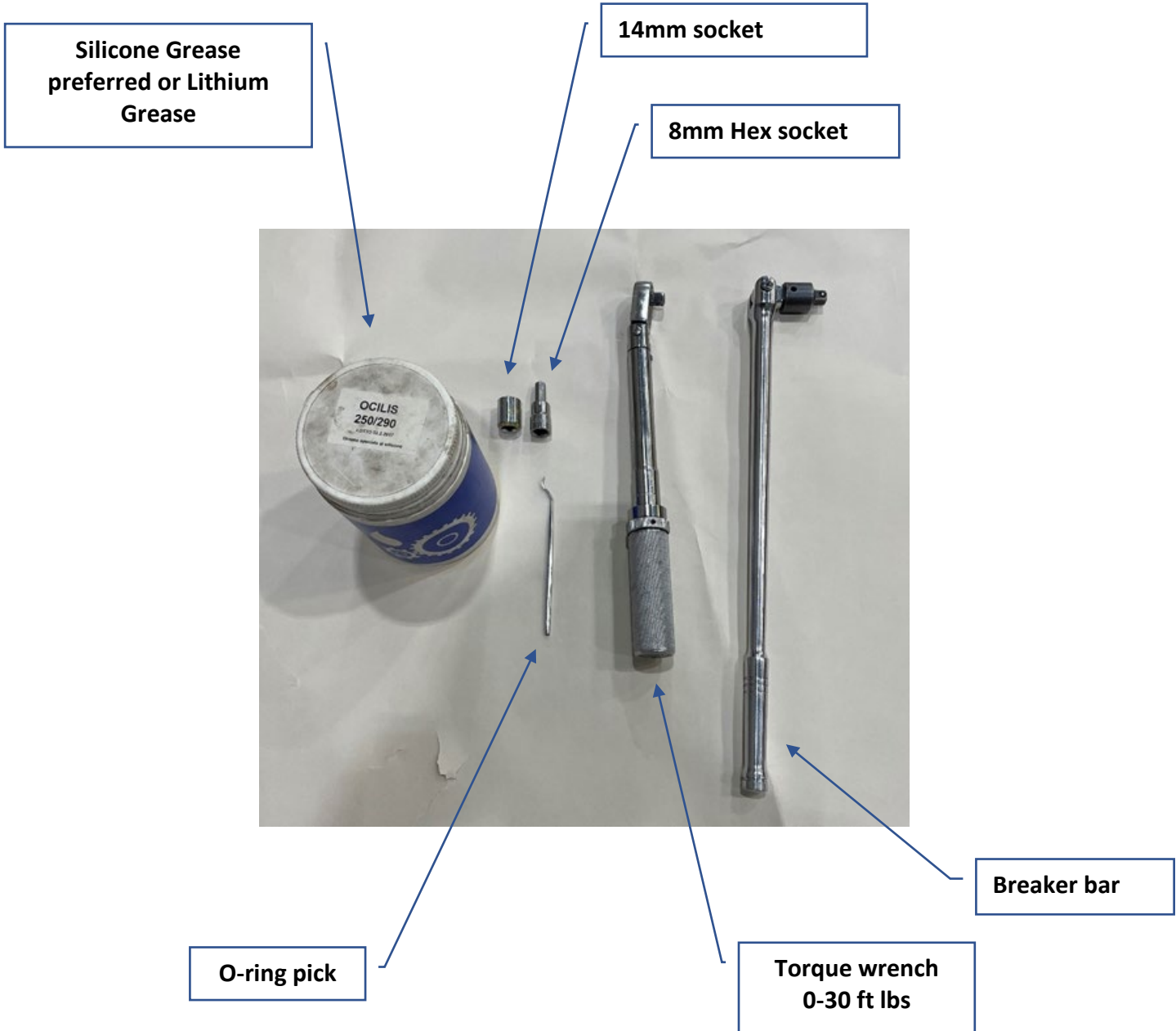
70626001PR (KTX24)
70625901PR (KTX28)

04 /25/ 2024

Parts Description



Tools required



Other assorted other hand tools to remove fittings (soft face mallet).

Step 1

To assemble the new KTX kit you will require the following items from the old KT pump. The complete power end and 3x plunger bolts as shown in image.



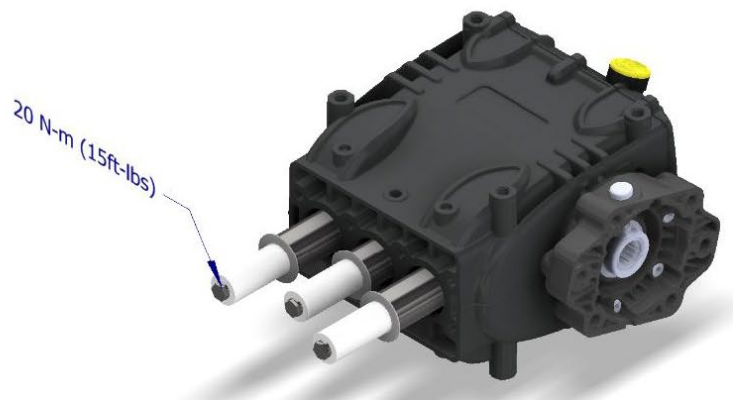
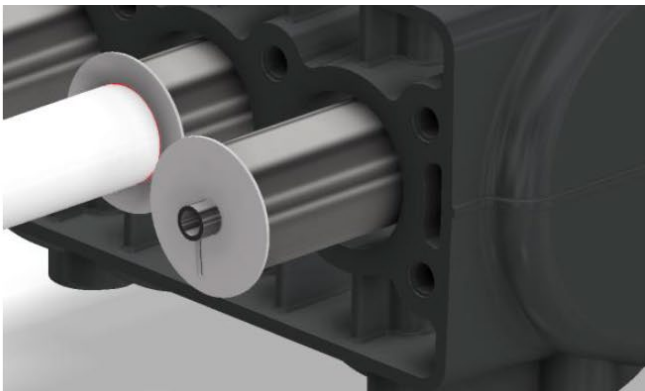
Step 2

Remove the old plunger bolt O rings. Apply some grease, and insert the new O-rings into the existing plunger retaining bolts as shown.



Step 3

1. Remove the new plungers from the packing stack assembly. (for shipping protection).
2. Install the new flinger washers (slot down).
3. Install the new plungers (they can only be installed one way), using existing plunger bolts. Torque the bolts to 20 N-m (15 ft.lbs).
4. Slowly rotate the crankshaft until the two outside plungers are fully extended as shown. Apply a coating of grease to the plungers.



Step 4

Install the packing preload springs into the packing stack. You will hear a “Click” when installed correctly.



Step 5

Apply a generous coating of grease in the pump head and onto packing stack assembly. Gently install the packing stack turning as you insert. The packing stack should be free to move and spring up and down within the pump head. Repeat on all 3.



Step 5

1. Ensure grease is on the 3x plungers.
2. Gently slide pump head onto the plungers.
3. Insert the 4 center head bolts (Shown below bolt #1,2,3 & 4), Slowly draw the head in against the crankcase using your 8mm hex socket. Take care to draw the head in evenly. Continue until the head is completely connected to the crankcase and head bolts are snug.
4. Insert the other 4 bolts (Shown below #5,6,7 & 8), Insert until head bolts are snug.
5. Using the torqueing sequence shown below. Torque all head bolts to 40 N-M (30 ft. Lbs)
6. Turn crankshaft to ensure it turns freely.
7. Installation is now complete.

