



Dynablast

A DIVISION OF JOHN BROOKS COMPANY LIMITED



HY-PACK PUMPS HYDRAULIC POWERED PUMPS

Pratissoli



MINI SKID

Designed to fit hydraulic motor with SAE B Flange, 1" Male Keyed or 13T Spline Shaft

KTR Coupler with Purple Spider Coupler included

Pratissoli

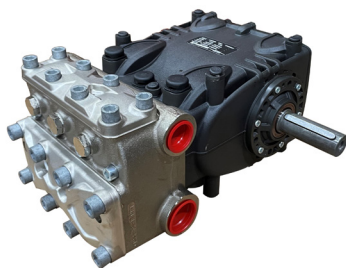


HYDROVAC SKID

Designed to fit hydraulic motor with SAE C flange, 1 3/8" Male Keyed Shaft

KTR Coupler with Purple Spider Coupler included

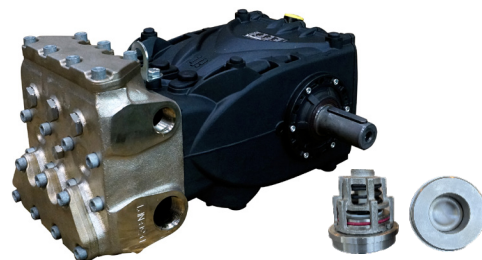
Pratissoli



KTX28A

- 18.4 GPM @ 2900 PSI @ 1,450 RPM
- Symmetrical 35 HP Crankcase
- 420 Stainless Steel, Nickel Coated Manifold
- Run Dry Seals
- 30 mm Male Shaft
- Available in SAE B 2-4F 13T 16/32DP

Pratissoli



KFR25A

- 19.4 GPM @ 3200 PSI @ 1,000 RPM
- Symmetrical 50 HP Crankcase
- 420 Stainless Steel, Nickel Coated Manifold
- Run Dry Seals, SS Valve Cages
- 40 mm Male Shaft
- Available in SAE C 2-4F 14T 12/24DP

AVAILABLE IN REVERSE SHAFT

MADE IN ITALY

COMPACT • LIGHT-WEIGHT • DIRECT DRIVE

EXCLUSIVE CANADIAN DISTRIBUTOR



DIRECT COUPLE - FEMALE SPLINE PUMP



T2040SPF

- 10.5 GPM @ 3,000 PSI @ 1,750 RPM
- 25 HP Crankcase
- Forged Brass Manifold
- SAE B 2-4F 13T 16/32DP

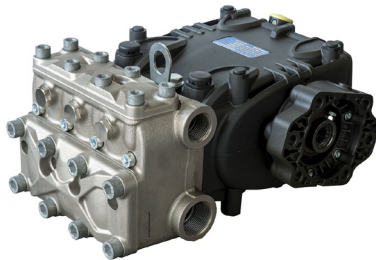
Pratissoli



KT20ASPF

- 9.5 GPM @ 5,800 PSI @ 1,450 RPM
- Symmetrical 35 HP crankcase
- 420 stainless steel, Nickel coated Manifold
- SAE B 2-4F 13T 16/32DP

Pratissoli



KTX28ASPF

- 18.4 GPM @ 2,900 PSI @ 1,450 RPM
- Symmetrical 35 HP Crankcase
- 420 Stainless Steel, Nickel Coated Manifold
- Run Dry Seals
- SAE B 2-4F 13T 16/32DP

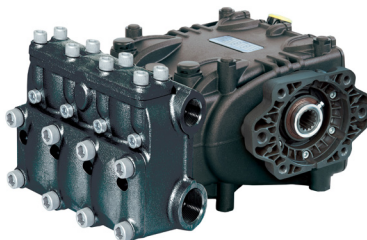
Pratissoli



HF25ASPF

- 20 GPM @ 4,000 PSI @ 1,000 RPM
- Symmetrical 50 HP Crankcase
- 420 Stainless Steel, Nickel Coated Manifold
- SAE C 2-4F 14T 12/24DP

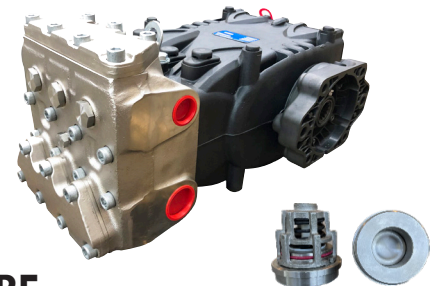
Pratissoli



KT28ASPF

- 18.4 GPM @ 3,000 PSI @ 1,450 RPM
- Symmetrical 35 HP Crankcase
- HR Coated Manifold
- SAE B 2-4F 13T 16/32DP

Pratissoli



KFR25ASPF

- 19.4 GPM @ 3,200 PSI @ 1,000 RPM
- Symmetrical 50 HP Crankcase
- 420 Stainless Steel, Nickel Coated Manifold
- Run Dry Seals, SS Valve Cages
- SAE C 2-4F 14T 12/24DP

AVAILABLE IN REVERSE SHAFT

MALE SHAFT - COUPLER PUMP PACKAGES HY-PACKS



TS2021BN

- 5.6 GPM @ 3,500 PSI @ 1,450 RPM
- 13.5 HP crankcase / 24mm Keyed Shaft
- Forged Brass Manifold Nickel coated

REQUIRES: Coupler input shaft – 7/8" or 1" Keyed and Bell Housing SAE B

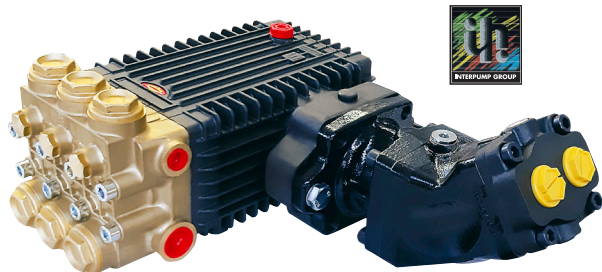


T2040

- 10.5 GPM @ 3,000 PSI @ 1,750 RPM
- 25 HP Crankcase/ 24mm Keyed Shaft
- Forged Brass Manifold

REQUIRES:

- Coupler Input Shaft - 7/8" or 1" Keyed
- Bell Housing SAE B



T2040-P34CC

- 10.5 GPM @ 3,000 PSI @ 1,750 RPM
- 25 HP Crankcase
- Forged Brass Manifold
- FOX 34 CC Bent Axis Piston Motor

Pratissoli



KT28A

- 18.4 GPM @ 2,900 PSI @ 1,450 RPM
- Symmetrical 35 HP crankcase / 30mm Keyed Shaft
- HR Coated Manifold

REQUIRES: Coupler input shaft – 1" Keyed and Bell Housing SAE B

Pratissoli



HF25A

- 19.4 GPM @ 4,060 PSI @ 1,000 RPM
- Symmetrical 50 HP Crankcase/ 40mm Keyed Shaft

REQUIRES:

- 420 Stainless Steel, Nickel Coated Manifold
- Coupler Input Shaft - 1-1/4" or 1-3/8" Keyed
- Bell Housing SAE C



KTX28ASPF-P64CC

- 18.4 GPM @ 3,000 PSI @ 1,450 RPM
- Symmetrical 35 HP Crankcase
- 420 Stainless Steel, Nickel Coated Manifold
- Run Dry Seals
- FOX 64 CC Bent Axis Piston Motor

MADE IN ITALY

FOR HYDROVAC!



TEL: 905-867-4642
WWW.DYNABLAST.CA

PUMP ACCESSORIES



PRESSURE RELIEF VALVES



21 GPM @ 7,250 PSI

HYDRAULIC BELL HOUSING



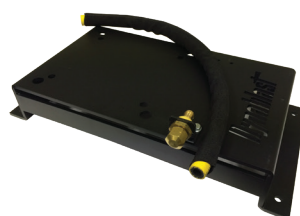
47 / 66 Series



Pratisoli

KT / HF Series

PUMP RISER



HV7071 Riser Kit



HV4766 Riser Kit

- 1/4" Plate Steel Formed and Welded •
- Powder Coated Paint •
- Pump Oil Drain Kit •

UNLOADER VALVES



4,050 PSI



4,050 PSI



5,800 PSI

INLET STRAINER



Various Sizes - 50 Mesh

GAUGES



0 to 10,000 PSI

MOTOR SPECIFICATIONS

MOTOR SIZE		FOX 34	FOX 47	FOX 64	FOX 84
Mounting Flange		SAE B			SAE C
Bi Directional Rotation		YES			
Loop Flushing Valve Included		YES			
Displacement	cm ³ /rev	34.05	47.15	64.08	84.38
Max. Operating Pressure	psi	5,075		4,640	5,365
Max. Peak Pressure	psi	5,800		5,075	6,090
Max. Intermittent Pressure	rpm	2,600	2,200	2,600	2,200
Max. Continuous Pressure	rpm	2,200	1,800	2,200	1,800
Min. Speed @ Max. Pressure	rpm	300		500	
Max. Pressure @ Drain	psi	58			
Operating Viscosity Range	cST	9 ÷ 75			
Optimal Viscosity Range	cST	15 ÷ 46			
Startup Max. Viscosity	cST	1,000			
Fluid Temperature	°C	-25 : +80			
Porting	IN	1-1/16" - 12 MJIC		1-5/16" - 12 MJIC	
	OUT				
	Case	9/16" - 18 MJIC			

HYPACK_EN_06/24